

Recombinant Human CCL3 protein

Cat. No. CCL3-291H Lot. No. (See product label)

SPECIFICATION

Product Overview Recombinant Human CCL3 protein was expressed in Escherichia coli.

Species Human

Source E.coli

ProteinLength 70

Description CCL3, also known as macrophage inflammatory protein-1 α (MIP-1 α), is a cytokine belonging to the CC chemokine family that is involved in the acute inflammatory state in the recruitment and activation of polymorphonuclear leukocytes. Studies showed CCL3 can bind to CCR1, CCR4 and CCR5. MIP-1 α can induce a dose-dependent inhibition of different strains of HIV-1, HIV-2, and simian immunodeficiency virus (SIV). Recombinant human MIP-1 α is a 7.8 kDa protein containing 69 amino acid residues, including the four highly conserved cysteine residues present in CC chemokines and it shares approximately 73 %, 74 % and 92 % amino acid sequence homology with the murine, rat and rhesus macaque protein.

Form Lyophilized from a 0.2 μ m filtered concentrated solution in 20 mM PB, pH 7.4, 100 mM NaCl.

Bio-activity Fully biologically active when compared to standard. The biological activity determined by a chemotaxis bioassay using human monocytes is in a concentration range of 1.0-10 ng/ml.

 Tel: 1-631-559-9269 1-516-512-3133

 Email: info@creative-biomart.com  Fax: 1-631-938-8127

 45-1 Ramsey Road, Shirley, NY 11967, USA

Molecular Mass	Approximately 7.8 kDa protein containing 70 amino acid residues, including the four highly conserved cysteine residues present in CC chemokines.
AA Sequence	ASLAADTPTACCFSTYTSRQIPQNFADYFETSSQCCKPGVIFLTKRSRQVCADPSEE WVQKYVSDLELSA
Endotoxin	Less than 1 EU/μg of rHuMIP-1α/CCL3 as determined by LAL method.
Purity	>96% by SDS-PAGE and HPLC analysis.
Storage	Use a manual defrost freezer and avoid repeated freeze-thaw cycles. 12 months from date of receipt, -20 to -70 centigrade as supplied. 1 month, 2 to 8 centigrade under sterile conditions after reconstitution. 3 months, -20 to -70 centigrade under sterile conditions after reconstitution.
Reconstitution	We recommend that this vial be briefly centrifuged prior to opening to bring the contents to the bottom. Reconstitute in sterile distilled water or aqueous buffer containing 0.1 % BSA to a concentration of 0.1-1.0 mg/mL. Stock solutions should be apportioned into working aliquots and stored at ≤-20 centigrade. Further dilutions should be made in appropriate buffered solutions.

GENE INFORMATION

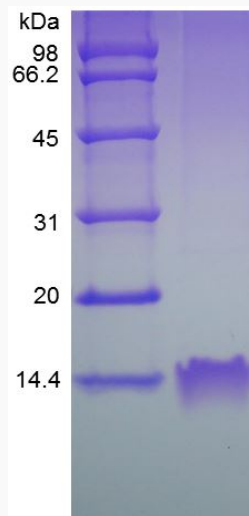
Gene Name	CCL3
Official Symbol	CCL3
Synonyms	CCL3; chemokine (C-C motif) ligand 3; SCYA3, small inducible cytokine A3 (homologous to mouse Mip 1a); C-C motif chemokine 3; G0S19 1; LD78ALPHA; MIP 1 alpha; SIS-beta; PAT 464.1; G0/G1 switch regulatory protein 19-1; macrophage inflammatory protein 1-alpha; tonsillar lymphocyte LD78 alpha protein; small inducible

 Tel: 1-631-559-9269 1-516-512-3133

 Email: info@creative-biomart.com  Fax: 1-631-938-8127

 45-1 Ramsey Road, Shirley, NY 11967, USA

cytokine A3 (homologous to mouse Mip-1a); MIP1A; SCYA3; G0S19-1; MIP-1-alpha;

Gene ID 6348**mRNA Refseq** NM_002983**Protein Refseq** NP_002974**MIM** 182283**UniProt ID** P10147**SDS-PAGE of CCL3-291H** Tel: 1-631-559-9269 1-516-512-3133 Email: info@creative-biomart.com  Fax: 1-631-938-8127 45-1 Ramsey Road, Shirley, NY 11967, USA