

Recombinant Dog CCL3 protein, His-tagged

Cat. No. CCL3-3381D Lot. No. (See product label)

SPECIFICATION

Product Overview	Recombinant Dog CCL3 protein(Ser19~Ala92), fused with N-terminal His Tag, was expressed in HEK293.
Species	Dog
Source	HEK293
ProteinLength	Ser19~Ala92
Form	PBS, pH7.4, containing 0.01% SKL, 1mM DTT, 5% Trehalose and Proclin300.
Molecular Mass	11kDa
Endotoxin	<1.0EU per 1g (determined by the LAL method)
Purity	> 90%
Storage	Avoid repeated freeze/thaw cycles. Store at 2-8°C for one month. Aliquot and store at -80°C for 12 months.
Reconstitution	Reconstitute in 10mM PBS (pH7.4) to a concentration of 0.1-1.0 mg/mL. Do not vortex.

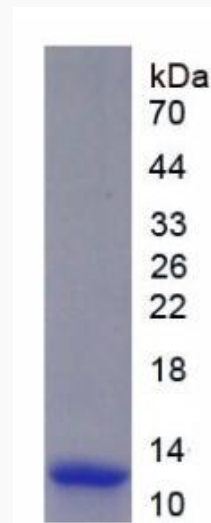
GENE INFORMATION

 Tel: 1-631-559-9269 1-516-512-3133

 Email: info@creative-biomart.com  Fax: 1-631-938-8127

 45-1 Ramsey Road, Shirley, NY 11967, USA

Gene Name	CCL3 chemokine (C-C motif) ligand 3 [<i>Canis lupus familiaris</i>]
Official Symbol	CCL3
Synonyms	CCL3; chemokine (C-C motif) ligand 3; C-C motif chemokine 3; CC chemokine ligand 3; small-inducible cytokine A3; chemokine (C-C motif) ligand 3-like 1; chemokine (C-C motif) ligand 3-like 3; CCL3L1; CCL3L3;
Gene ID	448787
mRNA Refseq	NM_001005251
Protein Refseq	NP_001005251

SDS-PAGE


 Tel: 1-631-559-9269 1-516-512-3133

 Email: info@creative-biomart.com  Fax: 1-631-938-8127

 45-1 Ramsey Road, Shirley, NY 11967, USA