

# Recombinant Human CCL3 Protein, Myc/DDK-tagged, C13 and N15-labeled

**Cat. No.** CCL3-4453H    **Lot. No.** (See product label)

## SPECIFICATION

<b>Product Overview</b>	CCL3 MS Standard C13 and N15-labeled recombinant protein (NP_002974) with a C-terminal MYC/DDK tag, was expressed in HEK293 cells.
<b>Species</b>	Human
<b>Source</b>	HEK293
<b>Description</b>	This locus represents a small inducible cytokine. The encoded protein, also known as macrophage inflammatory protein 1 alpha, plays a role in inflammatory responses through binding to the receptors CCR1, CCR4 and CCR5. Polymorphisms at this locus may be associated with both resistance and susceptibility to infection by human immunodeficiency virus type 1.
<b>Molecular Mass</b>	10.1 kDa
<b>AA Sequence</b>	MQVSTAALAVLLCTMALCNQFSASLAADTPTACCFSYTSRQIPQNFADYFETSSQC SKPGVIFLTKRSRQVCADPSEEWVQKYVSDLELSATRTRPLEQKLISEEDLAANDILD YKDDDDKV
<b>Purity</b>	> 80% as determined by SDS-PAGE and Coomassie blue staining
<b>Stability</b>	Stable for 3 months from receipt of products under proper storage and handling conditions.

 Tel: 1-631-559-9269    1-516-512-3133

 Email: [info@creative-biomart.com](mailto:info@creative-biomart.com)     Fax: 1-631-938-8127

 45-1 Ramsey Road, Shirley, NY 11967, USA

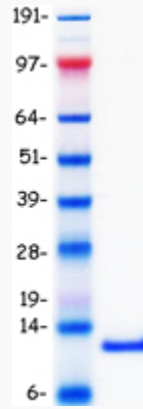
<b>Storage</b>	Store at -80 centigrade. Avoid repeated freeze-thaw cycles.
<b>Concentration</b>	50 µg/mL as determined by BCA
<b>Storage Buffer</b>	100 mM glycine, 25 mM Tris-HCl, pH 7.3.
<b>GENE INFORMATION</b>	
<b>Gene Name</b>	<a href="#">CCL3 C-C motif chemokine ligand 3 [ Homo sapiens (human) ]</a>
<b>Official Symbol</b>	<a href="#">CCL3</a>
<b>Synonyms</b>	CCL3; chemokine (C-C motif) ligand 3; SCYA3, small inducible cytokine A3 (homologous to mouse Mip 1a); C-C motif chemokine 3; G0S19 1; LD78ALPHA; MIP 1 alpha; SIS-beta; PAT 464.1; G0/G1 switch regulatory protein 19-1; macrophage inflammatory protein 1-alpha; tonsillar lymphocyte LD78 alpha protein; small inducible cytokine A3 (homologous to mouse Mip-1a); MIP1A; SCYA3; G0S19-1; MIP-1-alpha;
<b>Gene ID</b>	<a href="#">6348</a>
<b>mRNA Refseq</b>	<a href="#">NM_002983</a>
<b>Protein Refseq</b>	<a href="#">NP_002974</a>
<b>MIM</b>	<a href="#">182283</a>
<b>UniProt ID</b>	<a href="#">P10147</a>

 Tel: 1-631-559-9269 1-516-512-3133

 Email: [info@creative-biomart.com](mailto:info@creative-biomart.com)  Fax: 1-631-938-8127

 45-1 Ramsey Road, Shirley, NY 11967, USA

**SDS-PAGE**



 Tel: 1-631-559-9269 1-516-512-3133

 Email: [info@creative-biomart.com](mailto:info@creative-biomart.com)  Fax: 1-631-938-8127

 45-1 Ramsey Road, Shirley, NY 11967, USA