

## Recombinant Human CCL3 protein, His-tagged

Cat. No. CCL3-475H Lot. No. (See product label)

### SPECIFICATION

<b>Product Overview</b>	Recombinant Human CCL3 (P10147) aa. (Ser24~Ala92) fused with His tag was produced in HEK293F cells.
<b>Species</b>	Human
<b>Source</b>	HEK293
<b>ProteinLength</b>	Ser24~Ala92
<b>Description</b>	This locus represents a small inducible cytokine. The encoded protein, also known as macrophage inflammatory protein 1 alpha, plays a role in inflammatory responses through binding to the receptors CCR1, CCR4 and CCR5. Polymorphisms at this locus may be associated with both resistance and susceptibility to infection by human immunodeficiency virus type 1.
<b>Form</b>	Freeze-dried powder
<b>Molecular Mass</b>	Predicted Molecular Mass: 9.3kDa; Accurate Molecular Mass: 14kDa as determined by SDS-PAGE reducing conditions.
<b>Endotoxin</b>	<1.0EU per 1ug (determined by the LAL method)
<b>Purity</b>	> 95%
<b>Characteristic</b>	Isoelectric point is 4.8.

 Tel: 1-631-559-9269 1-516-512-3133

 Email: [info@creative-biomart.com](mailto:info@creative-biomart.com)  Fax: 1-631-938-8127

 45-1 Ramsey Road, Shirley, NY 11967, USA

<b>Applications</b>	SDS-PAGE; WB; ELISA; IP; CoIP; EMSA; Reporter Assays; Purification; Amine Reactive Labeling
<b>Stability</b>	The thermal stability is described by the loss rate. The loss rate was determined by accelerated thermal degradation test, that is, incubate the protein at 37°C for 48h, and no obvious degradation and precipitation were observed. The loss rate is less than 5% within the expiration date under appropriate storage condition.
<b>Storage</b>	Avoid repeated freeze/thaw cycles. Store at 2-8°C for one month. Aliquot and store at -80°C for 12 months.
<b>Concentration</b>	200ug/mL
<b>Storage buffer</b>	20mM Tris, 150mM NaCl, pH8.0, containing 1mM EDTA, 1mM DTT, 5% Trehalose and Proclin300.
<b>Reconstitution</b>	Reconstitute in 20mM Tris, 150mM NaCl (pH8.0) to a concentration of 0.1-1.0 mg/mL. Do not vortex

## GENE INFORMATION

<b>Gene Name</b>	CCL3 C-C motif chemokine ligand 3 [ Homo sapiens (human) ]
<b>Official Symbol</b>	CCL3
<b>Synonyms</b>	CCL3; C-C motif chemokine ligand 3; MIP1A; SCYA3; G0S19-1; LD78ALPHA; MIP-1-alpha; C-C motif chemokine 3; G0/G1 switch regulatory protein 19-1; PAT 464.1; SIS-beta; chemokine (C-C motif) ligand 3; macrophage inflammatory protein 1-alpha; small inducible cytokine A3 (homologous to mouse Mip-1a); tonsillar lymphocyte LD78 alpha protein

 Tel: 1-631-559-9269 1-516-512-3133

 Email: [info@creative-biomart.com](mailto:info@creative-biomart.com)  Fax: 1-631-938-8127

 45-1 Ramsey Road, Shirley, NY 11967, USA

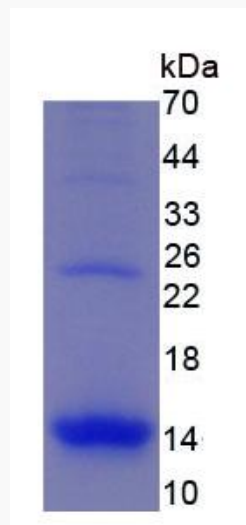
**Gene ID** 6348

**mRNA Refseq** NM\_002983.2

**Protein Refseq** NP\_002974.1

**UniProt ID** P10147

**SDS-PAGE**



 Tel: 1-631-559-9269 1-516-512-3133

 Email: [info@creative-biomart.com](mailto:info@creative-biomart.com)  Fax: 1-631-938-8127

 45-1 Ramsey Road, Shirley, NY 11967, USA