

Active Recombinant Human CCL3 protein, His-tagged

Cat. No. CCL3-5633H **Lot. No.** (See product label)

SPECIFICATION

Product Overview	Active Recombinant Human CCL3 protein(P10147)(24~92 aa), fused with N-terminal His tag, was expressed in HEK293.
Species	Human
Source	HEK293
ProteinLength	24-92 aa
Form	Lyophilized from sterile 20mM Tris, 150mM NaCl, pH8.0, containing 1mM EDTA, 1mM DTT, 0.01% SKL, 5% Trehalose and Proclin300.
Bio-activity	MIP-1a (macrophage inflammatory protein 1-alpha) also known as Chemokine (C-C motif) ligand 3 (CCL3), is a cytokine belonging to the CC chemokine family that is involved in the recruitment and activation of macrophages, monocytes and neutrophils. In this case, chemotaxis assay used 24-well microchemotaxis system was undertaken to evaluate the chemotactic effect of MIP-1a on the human monocytic cell line THP1. Briefly, THP1 cells were seeded into the upper chambers (100µcell suspension, 10 ⁶ cells/ml in RPMI 1640 with 0.5% FBS) and MIP-1a (100ng/mL, diluted in serum free RPMI 1640) was added in lower chamber with a polycarbonate filter (8µm pore size) used to separate the two compartments. After incubation at 37°C with 5% CO ₂ for 5h, the filter was removed, then cells in low chamber were observed by inverted microscope at low magnification (×40) and the number of migrated cells were counted at high magnification (×400) randomly (five

 Tel: 1-631-559-9269 1-516-512-3133

 Email: info@creative-biomart.com  Fax: 1-631-938-8127

 45-1 Ramsey Road, Shirley, NY 11967, USA

fields for each filter). By counting migrated cells in low chamber at high magnification (×400) randomly, it was shown that a mean of 41.2 THP1 cells/field migrated towards serum free RPMI 1640 medium with 100ng/mL MIP-1a, while only 3.6 THP1 cells/field migrated towards serum free RPMI 1640 medium. And the migrated THP1 cells in low chamber at low magnification (×40) was shown.

Molecular Mass	9.3kDa
Endotoxin	<1.0EU per 1µg (determined by the LAL method).
Purity	> 95% as determined by SDS-PAGE.
Storage	Avoid repeated freeze/thaw cycles. Store at -20°C for 12 months. Aliquot and store at -80°C for 12 months.
Reconstitution	Reconstitute in 20mM Tris, 150mM NaCl (pH8.0) to a concentration of 0.1-1.0 mg/mL. Do not vortex.

GENE INFORMATION

Gene Name	CCL3 chemokine (C-C motif) ligand 3 [Homo sapiens]
Official Symbol	CCL3
Synonyms	CCL3; chemokine (C-C motif) ligand 3; SCYA3, small inducible cytokine A3 (homologous to mouse Mip 1a); C-C motif chemokine 3; G0S19 1; LD78ALPHA; MIP 1 alpha; SIS-beta; PAT 464.1; G0/G1 switch regulatory protein 19-1; macrophage inflammatory protein 1-alpha; tonsillar lymphocyte LD78 alpha protein; small inducible cytokine A3 (homologous to mouse Mip-1a); MIP1A; SCYA3; G0S19-1; MIP-1-alpha;
Gene ID	6348

 Tel: 1-631-559-9269 1-516-512-3133

 Email: info@creative-biomart.com  Fax: 1-631-938-8127

 45-1 Ramsey Road, Shirley, NY 11967, USA

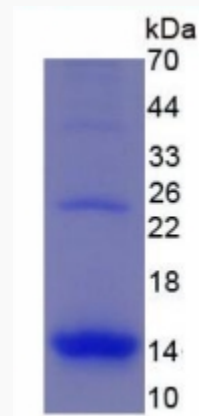
mRNA Refseq [NM_002983](#)

Protein Refseq [NP_002974](#)

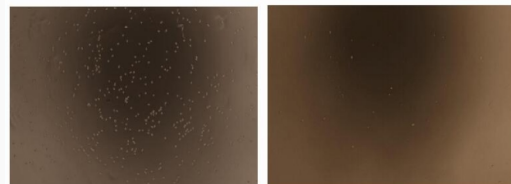
MIM [182283](#)

UniProt ID [P10147](#)

SDS-PAGE



Activity



 Tel: 1-631-559-9269 1-516-512-3133

 Email: info@creative-biomart.com  Fax: 1-631-938-8127

 45-1 Ramsey Road, Shirley, NY 11967, USA