

Recombinant Dog CCL3 protein, His & GST-tagged

Cat. No. CCL3-704D Lot. No. (See product label)

SPECIFICATION

Product Overview	Recombinant Dog CCL3 aa. (Gln20~Ala92 (Accession# Q68A92)) fused with N-terminal His & GST tag was produced in E. coli cells.
Species	Dog
Source	E.coli
ProteinLength	Gln20~Ala92
Form	Freeze-dried powder
Molecular Mass	Predicted Molecular Mass: 38.1kDa
Endotoxin	<1.0EU per 1g (determined by the LAL method)
Purity	>95%
Characteristic	The isoelectric point is 8.4.
Applications	SDS-PAGE; WB; ELISA; IP.
Stability	The thermal stability is described by the loss rate. The loss rate was determined by accelerated thermal degradation test, that is, incubate the protein at 37°C for 48h, and no obvious degradation and precipitation were observed. The loss rate is less than 5% within the expiration date under appropriate storage condition.

 Tel: 1-631-559-9269 1-516-512-3133

 Email: info@creative-biomart.com  Fax: 1-631-938-8127

 45-1 Ramsey Road, Shirley, NY 11967, USA

Storage	Avoid repeated freeze/thaw cycles. Store at 2-8°C for one month. Aliquot and store at -80°C for 12 months.
Storage buffer	Supplied as lyophilized form in PBS, pH 7.4, containing 5% sucrose, 0.01% sarcosyl.
Reconstitution	Reconstitute in sterile PBS, pH7.2-pH7.4.

GENE INFORMATION

Gene Name	CCL3 chemokine (C-C motif) ligand 3 [<i>Canis lupus familiaris</i> (dog)]
Official Symbol	CCL3
Synonyms	CCL3L1; CCL3L3; chemokine (C-C motif) ligand 3-like 1; chemokine (C-C motif) ligand 3-like 3; small-inducible cytokine A3
Gene ID	448787
mRNA Refseq	NM_001005251.2
Protein Refseq	NP_001005251.2
UniProt ID	Q68A92

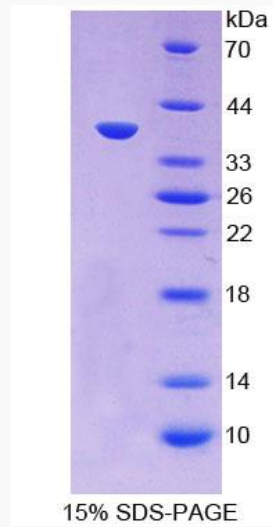
 Tel: 1-631-559-9269 1-516-512-3133

 Email: info@creative-biomart.com  Fax: 1-631-938-8127

 45-1 Ramsey Road, Shirley, NY 11967, USA



SDS-PAGE



Tel: 1-631-559-9269 1-516-512-3133

Email: info@creative-biomart.com Fax: 1-631-938-8127

45-1 Ramsey Road, Shirley, NY 11967, USA