

Recombinant Human CCL3L1 Protein, GST-Tagged

Cat. No. CCL3L1-0639H Lot. No. (See product label)

SPECIFICATION

Product Overview	Human CCL3L1 full-length ORF (AAH27888.1, 1 a.a. - 93 a.a.) recombinant protein with GST-tag at N-terminal.
Species	Human
Source	Wheat Germ
Description	<p>This gene is one of several cytokine genes that are clustered on the q-arm of chromosome 17. Cytokines are a family of secreted proteins that function in inflammatory and immunoregulatory processes. The protein encoded by this gene binds to several chemokine receptors, including chemokine binding protein 2 and chemokine (C-C motif) receptor 5 (CCR5). CCR5 is a co-receptor for HIV, and binding of this protein to CCR5 inhibits HIV entry. The copy number of this gene varies among individuals, where most individuals have one to six copies, and a minority of individuals have zero or more than six copies. There are conflicting reports about copy number variation of this gene and its correlation to disease susceptibility. This record represents one of two copies that are present on the ALT_REF_LOCI_2 alternate haplotype of the GRCh38 human reference genome assembly. Alternative splicing of this gene results in multiple transcript variants. [provided by RefSeq, Apr 2014]</p>
Molecular Mass	35.97 kDa
AA Sequence	MQVSTAALAVLLCTMALCNQVLSAPLAADTPTACCFSYTSRQIPQNFADYFETSSQ

 Tel: 1-631-559-9269 1-516-512-3133

 Email: info@creative-biomart.com  Fax: 1-631-938-8127

 45-1 Ramsey Road, Shirley, NY 11967, USA

CSKPSVIFLTRGRQVCADPSEEWVQKYVSDLELSA

Applications

Enzyme-linked Immunoabsorbent Assay
 Western Blot (Recombinant protein)
 Antibody Production
 Protein Array

Storage

Store at -80 centigrade. Aliquot to avoid repeated freezing and thawing.

Storage Buffer

50 mM Tris-HCl, 10 mM reduced Glutathione, pH=8.0 in the elution buffer.

GENE INFORMATION

Gene Name

CCL3L1 chemokine (C-C motif) ligand 3-like 1 [Homo sapiens]

Official Symbol

CCL3L1

Synonyms

CCL3L1; chemokine (C-C motif) ligand 3-like 1; D17S1718, SCYA3L, SCYA3L1, small inducible cytokine A3 like 1; C-C motif chemokine 3-like 1; G0S19 2; LD78BETA; PAT 464.2; LD78-beta(1-70); small inducible cytokine A3-like 1; small-inducible cytokine A3-like 1; G0/G1 switch regulatory protein 19-2; tonsillar lymphocyte LD78 beta protein; LD78; 464.2; MIP1AP; SCYA3L; G0S19-2; SCYA3L1; D17S1718; MGC12815; MGC104178; MGC182017;

Gene ID

6349

mRNA Refseq

NM_021006

Protein Refseq

NP_066286

MIM

601395

 Tel: 1-631-559-9269 1-516-512-3133

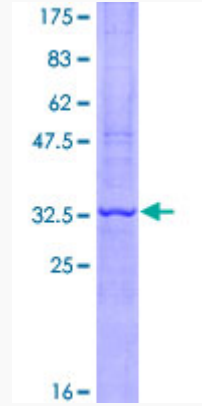
 Email: info@creative-biomart.com  Fax: 1-631-938-8127

 45-1 Ramsey Road, Shirley, NY 11967, USA

UniProt ID

P16619

Quality Control
Testing



12.5% SDS-PAGE Stained with Coomassie Blue.

 Tel: 1-631-559-9269 1-516-512-3133

 Email: info@creative-biomart.com  Fax: 1-631-938-8127

 45-1 Ramsey Road, Shirley, NY 11967, USA