

Recombinant Human CCL3L1 Protein (Ala24-Ala93), C-His tagged

Cat. No. CCL3L1-1082H Lot. No. (See product label)

SPECIFICATION

Product Overview	Recombinant human CCL3L1 (Ala24-Ala93) fused with the C-terminal His tag was expressed in Mammalian cells.
Species	Human
Source	Mammalian Cells
ProteinLength	Ala24-Ala93
Form	Lyophilized powder/frozen liquid
Molecular Mass	7.7 kDa
Purity	>90% as determined by SDS-PAGE.
Notes	For research use only.
Storage	Use a manual defrost freezer and avoid repeated freeze thaw cycles. Store at 2 to 8 centigrade for one week. Store at -20 to -80 centigrade for twelve months from the date of receipt.
Storage Buffer	Supplied as solution form in PBS or lyophilized from PBS.
Reconstitution	Reconstitute in sterile water for a stock solution.

 Tel: 1-631-559-9269 1-516-512-3133

 Email: info@creative-biomart.com  Fax: 1-631-938-8127

 45-1 Ramsey Road, Shirley, NY 11967, USA

Shipping They are shipped out with dry ice/blue ice unless customers require otherwise.

GENE INFORMATION

Gene Name CCL3L1 chemokine (C-C motif) ligand 3-like 1 [Homo sapiens (human)]

Official Symbol CCL3L1

Synonyms

CCL3L1; chemokine (C-C motif) ligand 3-like 1; D17S1718, SCYA3L, SCYA3L1, small inducible cytokine A3 like 1; C-C motif chemokine 3-like 1; G0S19 2; LD78BETA; PAT 464.2; LD78-beta (1-70); small inducible cytokine A3-like 1; small-inducible cytokine A3-like 1; G0/G1 switch regulatory protein 19-2; tonsillar lymphocyte LD78 beta protein; LD78; 464.2; MIP1AP; SCYA3L; G0S19-2; SCYA3L1; D17S1718; MGC12815; MGC104178; MGC182017;

Gene ID 6349

mRNA Refseq NM_021006

Protein Refseq NP_066286

MIM 601395

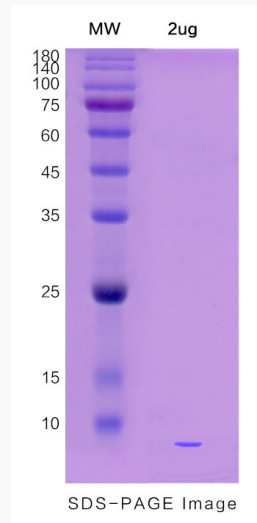
UniProt ID P16619

 Tel: 1-631-559-9269 1-516-512-3133

 Email: info@creative-biomart.com  Fax: 1-631-938-8127

 45-1 Ramsey Road, Shirley, NY 11967, USA

SDS-PAGE



 Tel: 1-631-559-9269 1-516-512-3133

 Email: info@creative-biomart.com  Fax: 1-631-938-8127

 45-1 Ramsey Road, Shirley, NY 11967, USA