

Recombinant Swine Chemokine (C-C motif) Ligand 3-like 1

Cat. No. CCL3L1-145S Lot. No. (See product label)

SPECIFICATION

Product Overview	Recombinant Swine CCL3L1 protein was expressed in Yeast and purified by using Ion-exchange chromatography, 7.8 kDa (70 aa).
Species	Pig
Source	Yeast
Description	This gene is one of several chemokine genes clustered on the q-arm of chromosome 17. Chemokines are a family of secreted proteins involved in immunoregulatory and inflammatory processes. Specifically, chemokines attract lymphocytes to sites of infection or damage. This protein binds to several chemokine receptors including chemokine binding protein 2 (CCBP2 or D6) and chemokine (C-C motif) receptor 5 (CCR5).
Sequences Of Amino Acids	APLGADTPTA CCFSYTSRQL PRKFDVADYFE TSSQCCKPGV IFQTKKGREV CANPEDAWVQ EYISDLELNA.
Formulation/Reconstitution	Lyophilized. Reconstitute with sterile phosphate-buffered saline containing at least 0.1% carrier protein.
Purity	>95% as visualized by SDS-PAGE analysis.
Purification	Ion-exchange chromatography.
Biological Activity	The biological activity of recombinant swine CCL3L1 was determined in a

 Tel: 1-631-559-9269 1-516-512-3133

 Email: info@creative-biomart.com  Fax: 1-631-938-8127

 45-1 Ramsey Road, Shirley, NY 11967, USA

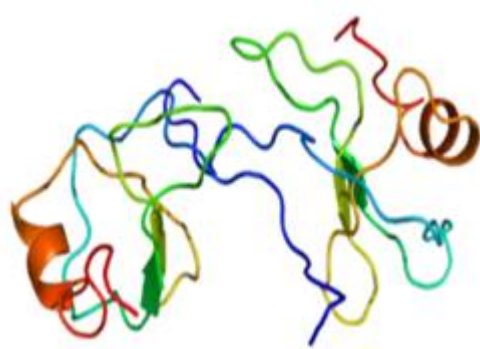
	chemotaxis assay using a Boyden chamber with freshly isolated swine PBMC monocytes using a Percoll gradient enrichment method. Biological activity typically peaks at 100 ng/mL.
Storage	Stable for up to twelve months from date of receipt at -20°C. Stable for at least 3 months when stored in working aliquots with a carrier protein at -20°C. Avoid repeated freeze/thaw cycles.
Pathways	Chemokine signaling pathway; Cytokine-cytokine receptor interaction
GENE INFORMATION	
Gene Name	CCL3L1 chemokine (C-C motif) ligand 3-like 1 [Sus scrofa]
Synonyms	CCL3L1; chemokine (C-C motif) ligand 3-like 1; chemokine (C-C motif) ligand 3-like 1; chemokine ligand 3-like 1; macrophage inflammatory protein 1 alpha
Gene ID	494459
mRNA Refseq	NM_001009579
Protein Refseq	NP_001009579

 Tel: 1-631-559-9269 1-516-512-3133

 Email: info@creative-biomart.com  Fax: 1-631-938-8127

 45-1 Ramsey Road, Shirley, NY 11967, USA

PDB rendering based on
1dok



 Tel: 1-631-559-9269 1-516-512-3133

 Email: info@creative-biomart.com  Fax: 1-631-938-8127

 45-1 Ramsey Road, Shirley, NY 11967, USA