

Recombinant Human CCL3L1 protein, rFc-tagged

Cat. No. CCL3L1-3704H Lot. No. (See product label)

SPECIFICATION

| | |
|-------------------------|--|
| Product Overview | Recombinant Human CCL3L1 protein(P16619)(Ala24-Ala93), fused with N-terminal rFc tag, was expressed in HEK293. |
| Species | Human |
| Source | HEK293 |
| Form | Lyophilized from 0.22 µm filtered solution in PBS, pH 7.4. Normally 5% trehalose and 5% mannitol are added as protectants before lyophilization. |
| Molecular Mass | 35.0 kDa |
| Endotoxin | <0.1 EU/µg protein, LAL method |
| Purity | >90 %, SDS-PAGE |
| Storage | It is recommended that the protein be aliquoted for optimal storage. Avoid repeated freeze-thaw cycles. Until expiry date, -20°C to -80°C as lyophilized proteins. 3 months, -20°C to -80°C under sterile conditions after reconstitution. |
| Reconstitution | Briefly centrifuge the tube before opening. Reconstitute at 0.1-0.5 mg/mL in sterile water. |

GENE INFORMATION

 Tel: 1-631-559-9269 1-516-512-3133

 Email: info@creative-biomart.com  Fax: 1-631-938-8127

 45-1 Ramsey Road, Shirley, NY 11967, USA

| | |
|------------------------|---|
| Gene Name | CCL3L1 chemokine (C-C motif) ligand 3-like 1 [Homo sapiens] |
| Official Symbol | CCL3L1 |
| Synonyms | CCL3L1; chemokine (C-C motif) ligand 3-like 1; D17S1718, SCYA3L, SCYA3L1, small inducible cytokine A3 like 1; C-C motif chemokine 3-like 1; G0S19 2; LD78BETA; PAT 464.2; LD78-beta(1-70); small inducible cytokine A3-like 1; small-inducible cytokine A3-like 1; G0/G1 switch regulatory protein 19-2; tonsillar lymphocyte LD78 beta protein; LD78; 464.2; MIP1AP; SCYA3L; G0S19-2; SCYA3L1; D17S1718; MGC12815; MGC104178; MGC182017; |
| Gene ID | 6349 |
| mRNA Refseq | NM_021006 |
| Protein Refseq | NP_066286 |
| MIM | 601395 |
| UniProt ID | P16619 |

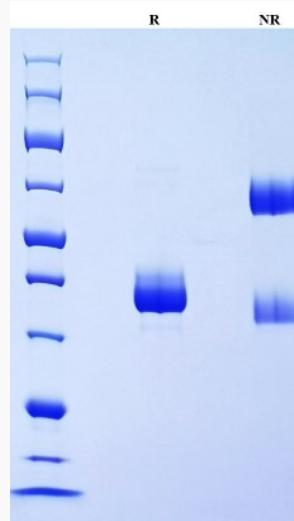
 Tel: 1-631-559-9269 1-516-512-3133

 Email: info@creative-biomart.com  Fax: 1-631-938-8127

 45-1 Ramsey Road, Shirley, NY 11967, USA



SDS-PAGE



Tel: 1-631-559-9269 1-516-512-3133

Email: info@creative-biomart.com Fax: 1-631-938-8127

45-1 Ramsey Road, Shirley, NY 11967, USA