

Recombinant Human CCL3L1 Protein, Myc/DDK-tagged, C13 and N15-labeled

Cat. No. CCL3L1-4028H **Lot. No.** (See product label)

SPECIFICATION

Product Overview

CCL3L1 MS Standard C13 and N15-labeled recombinant protein (NP_066286) with a C-terminal MYC/DDK tag, was expressed in HEK293 cells.

Species

Human

Source

HEK293

Description

This gene is one of several cytokine genes that are clustered on the q-arm of chromosome 17. Cytokines are a family of secreted proteins that function in inflammatory and immunoregulatory processes. The protein encoded by this gene binds to several chemokine receptors, including chemokine binding protein 2 and chemokine (C-C motif) receptor 5 (CCR5). CCR5 is a co-receptor for HIV, and binding of this protein to CCR5 inhibits HIV entry. The copy number of this gene varies among individuals, where most individuals have one to six copies, and a minority of individuals have zero or more than six copies. There are conflicting reports about copy number variation of this gene and its correlation to disease susceptibility. This record represents one of two copies that are present on the ALT_REF_LOCI_2 alternate haplotype of the GRCh38 human reference genome assembly. Alternative splicing of this gene results in multiple transcript variants.

Molecular Mass

10.2 kDa

AA Sequence

MQVSTAALAVLLCTMALCNQVLSAPLAADTPTACCF SYTSRQIPQNF IADYFETSSQ

 Tel: 1-631-559-9269 1-516-512-3133

 Email: info@creative-biomart.com  Fax: 1-631-938-8127

 45-1 Ramsey Road, Shirley, NY 11967, USA

CSKPSVIFLTRGRGRQVCADPSEEWVQKYVSDLELSATRTRPLEQKLISEEDLAANDIL
DYKDDDDKV

Purity > 80% as determined by SDS-PAGE and Coomassie blue staining

Stability Stable for 3 months from receipt of products under proper storage and handling conditions.

Storage Store at -80 centigrade. Avoid repeated freeze-thaw cycles.

Concentration 50 µg/mL as determined by BCA

Storage Buffer 100 mM glycine, 25 mM Tris-HCl, pH 7.3.

GENE INFORMATION

Gene Name CCL3L1 C-C motif chemokine ligand 3 like 1 [Homo sapiens (human)]

Official Symbol CCL3L1

Synonyms CCL3L1; chemokine (C-C motif) ligand 3-like 1; D17S1718, SCYA3L, SCYA3L1, small inducible cytokine A3 like 1; C-C motif chemokine 3-like 1; G0S19 2; LD78BETA; PAT 464.2; LD78-beta(1-70); small inducible cytokine A3-like 1; small-inducible cytokine A3-like 1; G0/G1 switch regulatory protein 19-2; tonsillar lymphocyte LD78 beta protein; LD78; 464.2; MIP1AP; SCYA3L; G0S19-2; SCYA3L1; D17S1718; MGC12815; MGC104178; MGC182017;

Gene ID 6349

mRNA Refseq NM_021006

 Tel: 1-631-559-9269 1-516-512-3133

 Email: info@creative-biomart.com  Fax: 1-631-938-8127

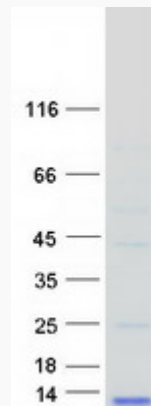
 45-1 Ramsey Road, Shirley, NY 11967, USA

Protein Refseq NP_066286

MIM 601395

UniProt ID P16619

SDS-PAGE



 Tel: 1-631-559-9269 1-516-512-3133

 Email: info@creative-biomart.com  Fax: 1-631-938-8127

 45-1 Ramsey Road, Shirley, NY 11967, USA