

Recombinant Human CCL3L1

Cat. No. CCL3L1-68H **Lot. No.** (See product label)

SPECIFICATION

Product Overview	Recombinant Human chemokine (C-C motif) ligand 3-like 1 was expressed in <i>E. Coli</i> .
Species	Human
Source	E.coli
Description	Recombinant Human LD78beta is a 7.8 kda protein containing 70 amino acid residues, which is closely related to MIP-1alpha. LD78b has enhanced receptor binding affinities to CCR5 and the beta-chemokine receptorD6 and has been shown to exhibit activities in HIV supression assays.
Amino Acid Sequence	APLAADTPTA CCFSYTSRQI PQNFIADYFETSSQCCKPSV IFLTKRGRQV CAD PSEEWVQKYVSDLELSA.
Supplied	Lyophilized powder with no additives.
Purity	>98% by SDS-Page analysis. Endotoxin level is less than 0.1ng per ug (1EU/ug) of protein.
Reactivity	Determined by its ability to chemoattract human monocytes using a concentration range of 1.0-10.0 ng/ml.
Note	If this material is not to be used for coating or labeling (or other applications requiring carrier free material), the addition of 0.1% BSA or HSA to dilution buffers or dilution in sterile culture media is recommended to enhance stability and minimize absorption to

 Tel: 1-631-559-9269 1-516-512-3133

 Email: info@creative-biomart.com  Fax: 1-631-938-8127

 45-1 Ramsey Road, Shirley, NY 11967, USA

vial. Ideally, maintain stock >20ug/ml.

Reconstitution

Lyophilized LD78-beta should be reconstituted in water to a concentration of 0.1-1mg/ml. We recommend a quick spin or gentle tap on table top followed by reconstitution in water. Allow to set at least 30 minutes at 4 °C, mix well. If desired, tighten cap and centrifuge for 1 minute at 1000rpm to concentrate material in vial. This solution can be diluted into other buffered solutions or stored at 4 °C for up to 1 week or at -20 °C for future use.

Storage

The lyophilized powder is stable at room temperature for a few weeks but it is best stored desiccated at -20 °C. Reconstituted LD78B should be stored in working aliquots at -20 °C. avoid frequent freeze thaw cycles.

GENE INFORMATION

Gene Name

[CCL3L1 chemokine \(C-C motif\) ligand 3-like 1 \[Homo sapiens \]](#)

Synonyms

chemokine (C-C motif) ligand 3-like 1; LD78; 464.2; MIP1AP; SCYA3L; G0S19-2; SCYA3L1; D17S1718; LD78BETA; MGC12815; MGC104178; MGC182017; CCL3L1; small inducible cytokine A3-like 1; LD78-beta; G0/G1 switch regulatory protein 19-2; G0S19-2 protein; PAT 464.2; Small-inducible cytokine A3-like 1; Tonsillar lymphocyte LD78 beta protein

Gene ID

[6349](#)

mRNA Refseq

[NM_021006](#)

Protein Refseq

[NP_066286](#)

MIM

[601395](#)

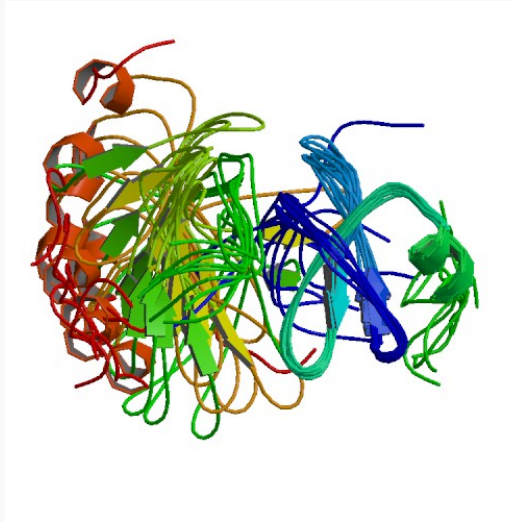
 Tel: 1-631-559-9269 1-516-512-3133

 Email: info@creative-biomart.com  Fax: 1-631-938-8127

 45-1 Ramsey Road, Shirley, NY 11967, USA

UniProt ID	P16619
Chromosome Location	17q21.1
Pathway	Chemokine signaling pathway; Cytokine-cytokine receptor interaction

PDB rendering based on 1b50.



 Tel: 1-631-559-9269 1-516-512-3133

 Email: info@creative-biomart.com  Fax: 1-631-938-8127

 45-1 Ramsey Road, Shirley, NY 11967, USA