

# Recombinant Human CCL4 Protein (Ala24-Asn92), N-GST tagged

**Cat. No.** CCL4-1282H    **Lot. No.** (See product label)

## SPECIFICATION

<b>Product Overview</b>	Recombinant Human CCL4/MIP-1-beta (Ala24-Asn92) fused with the N-GST tag was expressed in E. coli.
<b>Species</b>	Human
<b>Source</b>	E.coli
<b>ProteinLength</b>	Ala24-Asn92
<b>Form</b>	Lyophilized powder/frozen liquid
<b>Molecular Mass</b>	34.62 kDa
<b>Purity</b>	>90% as determined by SDS-PAGE.
<b>Notes</b>	For research use only.
<b>Storage</b>	Use a manual defrost freezer and avoid repeated freeze thaw cycles. Store at 2 to 8 centigrade for one week. Store at -20 to -80 centigrade for twelve months from the date of receipt.
<b>Storage Buffer</b>	0.01M PBS, pH 7.4, 0.02% NLS
<b>Reconstitution</b>	Reconstitute in sterile water for a stock solution.

 Tel: 1-631-559-9269    1-516-512-3133

 Email: [info@creative-biomart.com](mailto:info@creative-biomart.com)     Fax: 1-631-938-8127

 45-1 Ramsey Road, Shirley, NY 11967, USA

**Shipping** They are shipped out with dry ice/blue ice unless customers require otherwise.

## GENE INFORMATION

**Gene Name** CCL4 chemokine (C-C motif) ligand 4 [ Homo sapiens (human) ]

**Official Symbol** CCL4

**Synonyms**

CCL4; chemokine (C-C motif) ligand 4; LAG1, SCYA4, small inducible cytokine A4 (homologous to mouse Mip 1b); C-C motif chemokine 4; Act 2; AT744.1; MIP 1 beta; PAT 744; SIS-gamma; MIP-1-beta (1-69); CC chemokine ligand 4; secreted protein G-26; T-cell activation protein 2; small-inducible cytokine A4; lymphocyte-activation gene 1; G-26 T-lymphocyte-secreted protein; lymphocyte activation gene 1 protein; macrophage inflammatory protein 1-beta; small inducible cytokine A4 (homologous to mouse Mip-1b); ACT2; G-26; HC21; LAG1; LAG-1; MIP1B; SCYA2; SCYA4; MIP1B1; MIP-1-beta; MGC104418; MGC126025; MGC126026;

**Gene ID** 6351

**mRNA Refseq** NM\_002984

**Protein Refseq** NP\_002975

**MIM** 182284

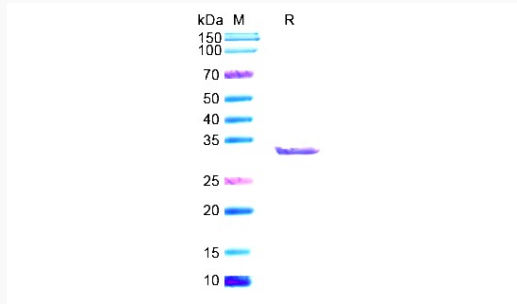
**UniProt ID** P13236

 Tel: 1-631-559-9269 1-516-512-3133

 Email: [info@creative-biomart.com](mailto:info@creative-biomart.com)  Fax: 1-631-938-8127


 45-1 Ramsey Road, Shirley, NY 11967, USA

**SDS-PAGE**



 Tel: 1-631-559-9269 1-516-512-3133

 Email: [info@creative-biomart.com](mailto:info@creative-biomart.com)  Fax: 1-631-938-8127

 45-1 Ramsey Road, Shirley, NY 11967, USA