

## Active Recombinant Human CCL4 protein, His-tagged

Cat. No. CCL4-2149H Lot. No. (See product label)

### SPECIFICATION

<b>Product Overview</b>	Active Recombinant Human CCL4 protein(P13236)(24~92 aa), fused with N-terminal His tag, was expressed in E.coli.
<b>Species</b>	Human
<b>Source</b>	E.coli
<b>ProteinLength</b>	24-92 aa
<b>Form</b>	Lyophilized from sterile 20mM Tris, 150mM NaCl, pH8.0, containing 1mM EDTA, 1mM DTT, 0.01% SKL, 5% Trehalose and Proclin300.
<b>Bio-activity</b>	Macrophage inflammatory protein-1 $\beta$ (MIP-1 $\beta$ ), also known as CCL4 is a CC chemokine with specificity for CCR5 receptors. It is a chemoattractant for natural killer cells, monocytes and a variety of other immune cells. MIP-1 $\beta$ is a kind of chemotactic cytokine. Thus, chemotaxis assay used 24-well microchemotaxis system was undertaken to detect the chemotactic effect of MIP-1 $\beta$ on the human T-lymphocyte leukemia cell line Jurkat. Briefly, Jurkat cells were seeded into the upper chambers (100uL cell suspension, 5 $\times$ 10 <sup>5</sup> cells/mL in RPMI 1640 with FBS free) and recombinant human MIP-1 $\beta$ (0.0001ng/mL, 0.001ng/mL, 0.1ng/mL, 1ng/mL, 10ng/mL, 100ng/mL diluted separately in serum free RPMI 1640) was added in lower chamber with a polycarbonate filter (8um pore size) used to separate the two compartments. After incubation at 37°C with 5% CO <sub>2</sub> for 2h, the filter was removed, then cells in low chamber were observed by inverted microscope at low magnification

 Tel: 1-631-559-9269 1-516-512-3133

 Email: [info@creative-biomart.com](mailto:info@creative-biomart.com)  Fax: 1-631-938-8127

 45-1 Ramsey Road, Shirley, NY 11967, USA

(×100) and the number of migrated cells were counted at high magnification (×200) randomly (five fields for each filter). Result shows recombinant human MIP-1β is able to induce migration of Jurkat cells. The migrated Jurkat cells in low chamber at low magnification (×100) were shown. Five fields of each chamber were randomly chosen, and the migrated cells were counted at high magnification (×200). Statistical results were shown. The optimum chemotaxis of MIP-1β occurs at 0.1~10pg/mL.

<b>Molecular Mass</b>	11.5kDa
<b>Endotoxin</b>	<1.0EU per 1μg (determined by the LAL method).
<b>Purity</b>	> 97% as determined by SDS-PAGE.
<b>Storage</b>	Avoid repeated freeze/thaw cycles. Store at -20°C for 12 months. Aliquot and store at -80°C for 12 months.
<b>Reconstitution</b>	Reconstitute in 20mM Tris, 150mM NaCl (pH8.0) to a concentration of 0.1-1.0 mg/mL. Do not vortex.

## GENE INFORMATION

<b>Gene Name</b>	CCL4 chemokine (C-C motif) ligand 4 [ Homo sapiens ]
<b>Official Symbol</b>	CCL4
<b>Synonyms</b>	CCL4; chemokine (C-C motif) ligand 4; LAG1, SCYA4, small inducible cytokine A4 (homologous to mouse Mip 1b); C-C motif chemokine 4; Act 2; AT744.1; MIP 1 beta; PAT 744; SIS-gamma; MIP-1-beta(1-69); CC chemokine ligand 4; secreted protein G-26; T-cell activation protein 2; small-inducible cytokine A4; lymphocyte-activation gene 1; G-26 T-lymphocyte-secreted protein; lymphocyte activation gene 1 protein; macrophage inflammatory protein 1-beta; small inducible cytokine A4 (homologous to

 Tel: 1-631-559-9269 1-516-512-3133

 Email: [info@creative-biomart.com](mailto:info@creative-biomart.com)  Fax: 1-631-938-8127

 45-1 Ramsey Road, Shirley, NY 11967, USA

mouse Mip-1b); ACT2; G-26; HC21; LAG1; LAG-1; MIP1B; SCYA2; SCYA4; MIP1B1; MIP-1-beta; MGC104418; MGC126025; MGC126026;

**Gene ID** 6351

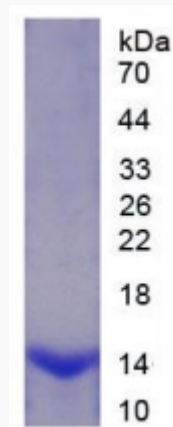
**mRNA Refseq** NM\_002984

**Protein Refseq** NP\_002975

**MIM** 182284

**UniProt ID** P13236

**SDS-PAGE**

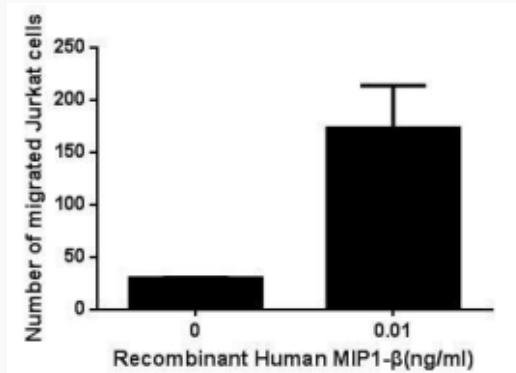


 Tel: 1-631-559-9269 1-516-512-3133

 Email: [info@creative-biomart.com](mailto:info@creative-biomart.com)  Fax: 1-631-938-8127

 45-1 Ramsey Road, Shirley, NY 11967, USA

**Activity**



 Tel: 1-631-559-9269 1-516-512-3133

 Email: [info@creative-biomart.com](mailto:info@creative-biomart.com)  Fax: 1-631-938-8127

 45-1 Ramsey Road, Shirley, NY 11967, USA