

## Active Recombinant Human CCL4 Protein (Ala24-Asn92), Animal-free, Carrier-free

Cat. No. CCL4-269H Lot. No. (See product label)

### SPECIFICATION

<b>Product Overview</b>	Recombinant Human CCL4 Protein (Ala24-Asn92) without tag was expressed in E. coli and Animal-free as well as Carrier-free.
<b>Species</b>	Human
<b>Source</b>	E.coli
<b>ProteinLength</b>	Ala24-Asn92
<b>Description</b>	C-C Motif Chemokine Ligand 4 (CCL4) is a 7.66 kDa cytokine with 69 amino acid residues. CCL4, also named macrophage inflammatory protein-1 $\beta$ (MIP-1 $\beta$ ), is mainly secreted from neutrophils, monocytes, B cells, T cells, fibroblasts, endothelial cells and epithelial cells. CCL4 recruits various immune cells like natural killer cells, monocytes, and neutrophils when CCL4 binds to CCR5. In addition, CCL4 mediates lymphocyte adhesion by Rac1 /Cdc42 signaling pathway and plays critical roles in different biological functions like maintenance of cell polarity, regulation of calcium ion transport and response to viruses.
<b>Form</b>	Lyophilized
<b>Bio-activity</b>	Measure by its ability to chemoattract BaF3 cells transfected with human CCR5. The ED50 for this effect is < 10 ng/mL.
<b>Molecular Mass</b>	The protein has a calculated MW of 7.75 kDa.

 Tel: 1-631-559-9269 1-516-512-3133

 Email: [info@creative-biomart.com](mailto:info@creative-biomart.com)  Fax: 1-631-938-8127

 45-1 Ramsey Road, Shirley, NY 11967, USA

	The protein migrates as 11 kDa under reducing condition (SDS-PAGE analysis).
<b>Endotoxin</b>	< 0.1 EU/μg of the protein by the LAL method.
<b>Purity</b>	>98% as determined by SDS-PAGE analysis.
<b>Storage</b>	This product is stable after storage at: -20 centigrade for 12 months in lyophilized state from date of receipt. -20 or -80 centigrade for 1 month under sterile conditions after reconstitution. Avoid repeated freeze/thaw cycles.
<b>Storage Buffer</b>	Lyophilized from a 0.2 μm filtered solution containing 50 mM Tris and 150 mM NaCl, pH 8.5.
<b>Reconstitution</b>	It is recommended to reconstitute the lyophilized protein in sterile H2O to a concentration not less than 200 μg/mL and incubate the stock solution for at least 20 min to ensure sufficient re-dissolved.
<b>Shipping</b>	The product is shipped with polar packs. Upon receipt, store it immediately at -20 centigrade or lower for long term storage.

## GENE INFORMATION

<b>Gene Name</b>	CCL4 chemokine (C-C motif) ligand 4 [ Homo sapiens (human) ]
<b>Official Symbol</b>	CCL4
<b>Synonyms</b>	CCL4; chemokine (C-C motif) ligand 4; LAG1, SCYA4, small inducible cytokine A4 (homologous to mouse Mip 1b); C-C motif chemokine 4; Act 2; AT744.1; MIP 1 beta; PAT 744; SIS-gamma; MIP-1-beta(1-69); CC chemokine ligand 4; secreted protein G-26; T-cell activation protein 2; small-inducible cytokine A4; lymphocyte-activation

 Tel: 1-631-559-9269 1-516-512-3133

 Email: [info@creative-biomart.com](mailto:info@creative-biomart.com)  Fax: 1-631-938-8127

 45-1 Ramsey Road, Shirley, NY 11967, USA

gene 1; G-26 T-lymphocyte-secreted protein; lymphocyte activation gene 1 protein; macrophage inflammatory protein 1-beta; small inducible cytokine A4 (homologous to mouse Mip-1b); ACT2; G-26; HC21; LAG1; LAG-1; MIP1B; SCYA2; SCYA4; MIP1B1; MIP-1-beta; MGC104418; MGC126025; MGC126026;

**Gene ID** [6351](#)

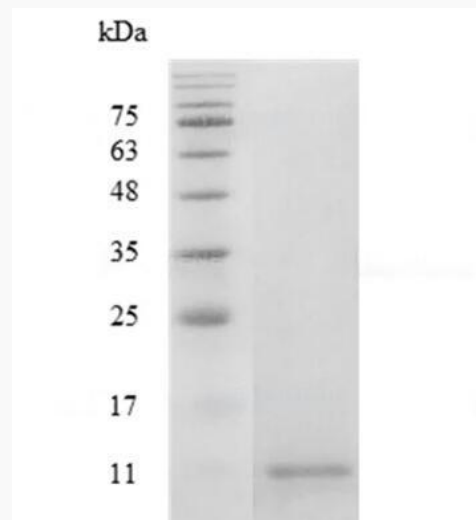
**mRNA Refseq** [NM\\_002984](#)

**Protein Refseq** [NP\\_002975](#)

**MIM** [182284](#)

**UniProt ID** [P13236](#)

**SDS-PAGE analysis  
of recombinant  
human CCL4.**



 Tel: 1-631-559-9269 1-516-512-3133

 Email: [info@creative-biomart.com](mailto:info@creative-biomart.com)  Fax: 1-631-938-8127

 45-1 Ramsey Road, Shirley, NY 11967, USA