

## Active Recombinant Human CCL4 protein, His&hFc-tagged

**Cat. No.** CCL4-3521H    **Lot. No.** (See product label)

### SPECIFICATION

<b>Product Overview</b>	Active Recombinant Human CCL4 protein(P13236)(24~92 aa), fused with N-terminal His tag and C-terminal hFc tag, was expressed in HEK293.
<b>Species</b>	Human
<b>Source</b>	HEK293
<b>ProteinLength</b>	24-92 aa
<b>Form</b>	Lyophilized from sterile PBS, pH7.4, containing 0.01% SKL, 1mM DTT, 5% Trehalose and Proclin300.
<b>Bio-activity</b>	Macrophage Inflammatory Protein 1 Beta (MIP1b), also known as CCL4, is a cytokine belonging to the CC chemokine family that is secreted at sites of inflammation by activated leukocytes, lymphocytes, vascular endothelial cells, and pulmonary smooth muscle cells. As a chemokine, MIP1b binds to the G-protein-coupled receptors CCR5 and CCR8, acting as a chemical attractant for natural killer cells, monocytes, and various other immune cells at sites of inflected or damaged tissue. At the same time, MIP1b can also retain the abilities to induce down-modulation of surface expression of the chemokine receptor CCR5 and to inhibit the CCR5-mediated entry of HIV-1 in T-cells. Chemokine C-C-Motif Receptor 7 (CCR7) can interact with MIP1b. Thus a functional binding ELISA assay was conducted to detect the interaction of recombinant human MIP1b and recombinant mouse CCR7. Briefly, biotin-linked MIP1b were diluted serially in PBS, with 0.01% BSA (pH 7.4). Duplicate samples of

 Tel: 1-631-559-9269    1-516-512-3133

 Email: [info@creative-biomart.com](mailto:info@creative-biomart.com)     Fax: 1-631-938-8127

 45-1 Ramsey Road, Shirley, NY 11967, USA

100 ul were then transferred to CCR7-coated microtiter wells and incubated for 1h at 37°C. Wells were washed with PBST 3 times and incubation with Streptavidin-HRP for 30min, then wells were aspirated and washed 5 times. With the addition of substrate solution, wells were incubated 15-25 minutes at 37°C. Finally, add 50 μ stop solution to the wells and read at 450/630 nm immediately. The binding activity of recombinant human MIP1b and recombinant mouse CCR7 was shown, the EC50 for this effect is 1.17 ug/mL.

<b>Molecular Mass</b>	35.0kDa
<b>Endotoxin</b>	<1.0EU per 1μg (determined by the LAL method).
<b>Purity</b>	> 95% as determined by SDS-PAGE.
<b>Storage</b>	Avoid repeated freeze/thaw cycles. Store at -20°C for 12 months. Aliquot and store at -80°C for 12 months.
<b>Reconstitution</b>	Reconstitute in 20mM Tris, 150mM NaCl (pH8.0) to a concentration of 0.1-1.0 mg/mL. Do not vortex.

## GENE INFORMATION

<b>Gene Name</b>	CCL4 chemokine (C-C motif) ligand 4 [ Homo sapiens ]
<b>Official Symbol</b>	CCL4
<b>Synonyms</b>	CCL4; chemokine (C-C motif) ligand 4; LAG1, SCYA4, small inducible cytokine A4 (homologous to mouse Mip 1b); C-C motif chemokine 4; Act 2; AT744.1; MIP 1 beta; PAT 744; SIS-gamma; MIP-1-beta(1-69); CC chemokine ligand 4; secreted protein G-26; T-cell activation protein 2; small-inducible cytokine A4; lymphocyte-activation gene 1; G-26 T-lymphocyte-secreted protein; lymphocyte activation gene 1 protein;

 Tel: 1-631-559-9269 1-516-512-3133

 Email: [info@creative-biomart.com](mailto:info@creative-biomart.com)  Fax: 1-631-938-8127

 45-1 Ramsey Road, Shirley, NY 11967, USA

macrophage inflammatory protein 1-beta; small inducible cytokine A4 (homologous to mouse Mip-1b); ACT2; G-26; HC21; LAG1; LAG-1; MIP1B; SCYA2; SCYA4; MIP1B1; MIP-1-beta; MGC104418; MGC126025; MGC126026;

**Gene ID** [6351](#)

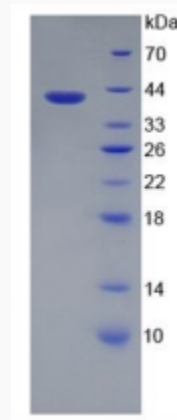
**mRNA Refseq** [NM\\_002984](#)

**Protein Refseq** [NP\\_002975](#)

**MIM** [182284](#)

**UniProt ID** [P13236](#)

**SDS-PAGE**

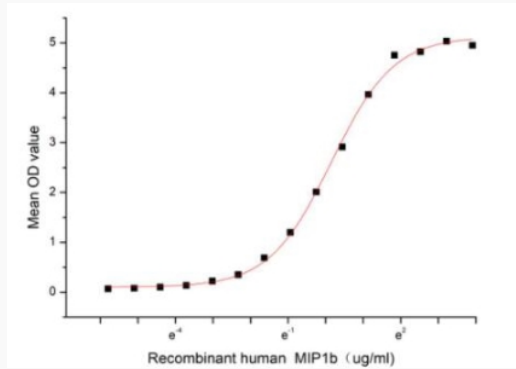


 Tel: 1-631-559-9269 1-516-512-3133

 Email: [info@creative-biomart.com](mailto:info@creative-biomart.com)  Fax: 1-631-938-8127

 45-1 Ramsey Road, Shirley, NY 11967, USA

**Activity**



 Tel: 1-631-559-9269 1-516-512-3133

 Email: [info@creative-biomart.com](mailto:info@creative-biomart.com)  Fax: 1-631-938-8127

 45-1 Ramsey Road, Shirley, NY 11967, USA