

Recombinant Human CCL4 Protein, Myc/DDK-tagged, C13 and N15-labeled

Cat. No. CCL4-6531H **Lot. No.** (See product label)

SPECIFICATION

Product Overview	CCL4 MS Standard C13 and N15-labeled recombinant protein (NP_002975) with a C-terminal MYC/DDK tag, was expressed in HEK293 cells.
Species	Human
Source	HEK293
Description	The protein encoded by this gene is a mitogen-inducible monokine and is one of the major HIV-suppressive factors produced by CD8+ T-cells. The encoded protein is secreted and has chemokinetic and inflammatory functions.
Molecular Mass	10.2 kDa
AA Sequence	MKLCVTVLSLLMLVAAFCSAPMSGSDPPTACCFSTARKLPRNFVVDYYETSSL CSQPAVVFQTKRSKQVCADPSESQVYVYDLELNTRTRPLEQKLISEEDLAANDIL DYKDDDDKV
Purity	> 80% as determined by SDS-PAGE and Coomassie blue staining
Stability	Stable for 3 months from receipt of products under proper storage and handling conditions.
Storage	Store at -80 centigrade. Avoid repeated freeze-thaw cycles.

 Tel: 1-631-559-9269 1-516-512-3133

 Email: info@creative-biomart.com  Fax: 1-631-938-8127

 45-1 Ramsey Road, Shirley, NY 11967, USA

Concentration 50 µg/mL as determined by BCA

Storage Buffer 100 mM glycine, 25 mM Tris-HCl, pH 7.3.

GENE INFORMATION

Gene Name CCL4 C-C motif chemokine ligand 4 [Homo sapiens (human)]

Official Symbol CCL4

Synonyms

CCL4; chemokine (C-C motif) ligand 4; LAG1, SCYA4, small inducible cytokine A4 (homologous to mouse Mip 1b); C-C motif chemokine 4; Act 2; AT744.1; MIP 1 beta; PAT 744; SIS-gamma; MIP-1-beta(1-69); CC chemokine ligand 4; secreted protein G-26; T-cell activation protein 2; small-inducible cytokine A4; lymphocyte-activation gene 1; G-26 T-lymphocyte-secreted protein; lymphocyte activation gene 1 protein; macrophage inflammatory protein 1-beta; small inducible cytokine A4 (homologous to mouse Mip-1b); ACT2; G-26; HC21; LAG1; LAG-1; MIP1B; SCYA2; SCYA4; MIP1B1; MIP-1-beta; MGC104418; MGC126025; MGC126026;

Gene ID 6351

mRNA Refseq NM_002984

Protein Refseq NP_002975

MIM 182284

UniProt ID P13236

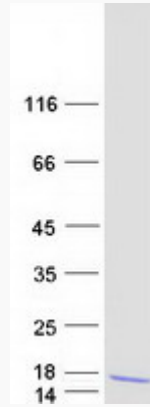
 Tel: 1-631-559-9269 1-516-512-3133

 Email: info@creative-biomart.com  Fax: 1-631-938-8127

 45-1 Ramsey Road, Shirley, NY 11967, USA



SDS-PAGE



Tel: 1-631-559-9269 1-516-512-3133

Email: info@creative-biomart.com Fax: 1-631-938-8127

45-1 Ramsey Road, Shirley, NY 11967, USA