

Recombinant Human CCL4 protein, His & GST-tagged

Cat. No. CCL4-710H Lot. No. (See product label)

SPECIFICATION

Product Overview	Recombinant Human CCL4 aa. (Ala24~Asn92 (Accession # P13236)) fused with N-terminal His & GST tag was produced in E. coli cells.
Species	Human
Source	E.coli
ProteinLength	Ala24~Asn92
Form	Freeze-dried powder
Molecular Mass	Predicted Molecular Mass: 40.2kDa
Endotoxin	<1.0EU per 1g (determined by the LAL method)
Purity	>95%
Characteristic	The isoelectric point is 6.1.
Applications	SDS-PAGE; WB; ELISA; IP.
Stability	The thermal stability is described by the loss rate. The loss rate was determined by accelerated thermal degradation test, that is, incubate the protein at 37°C for 48h, and no obvious degradation and precipitation were observed. The loss rate is less than 5% within the expiration date under appropriate storage condition.

 Tel: 1-631-559-9269 1-516-512-3133

 Email: info@creative-biomart.com  Fax: 1-631-938-8127

 45-1 Ramsey Road, Shirley, NY 11967, USA

Storage	Avoid repeated freeze/thaw cycles. Store at 2-8°C for one month. Aliquot and store at -80°C for 12 months.
Storage buffer	Supplied as lyophilized form in PBS, pH 7.4, containing 5% sucrose, 0.01% sarcosyl.
Reconstitution	Reconstitute in sterile PBS, pH7.2-pH7.4.

GENE INFORMATION

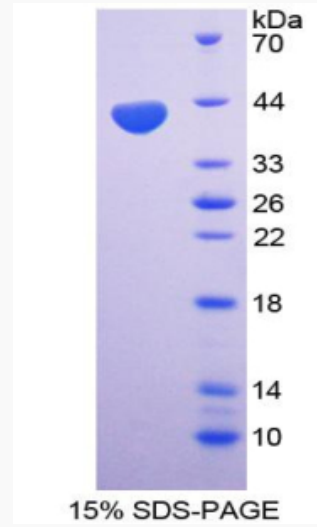
Gene Name	CCL4 C-C motif chemokine ligand 4 [Homo sapiens (human)]
Official Symbol	CCL4
Synonyms	ACT2; G-26; HC21; LAG1; LAG-1; MIP1B; SCYA2; SCYA4; MIP1B1; AT744.1; MIP-1-beta; G-26 T-lymphocyte-secreted protein; MIP-1-beta(1-69); PAT 744; SIS-gamma; T-cell activation protein 2; chemokine (C-C motif) ligand 4; lymphocyte activation gene 1 protein; macrophage inflammatory protein 1-beta; secreted protein G-26; small inducible cytokine A4 (homologous to mouse Mip-1b)
Gene ID	6351
mRNA Refseq	NM_002984.3
Protein Refseq	NP_002975.1
UniProt ID	P13236

 Tel: 1-631-559-9269 1-516-512-3133

 Email: info@creative-biomart.com  Fax: 1-631-938-8127

 45-1 Ramsey Road, Shirley, NY 11967, USA

SDS-PAGE



 Tel: 1-631-559-9269 1-516-512-3133

 Email: info@creative-biomart.com  Fax: 1-631-938-8127

 45-1 Ramsey Road, Shirley, NY 11967, USA