

Recombinant Human CCL4L1 Protein, GST-Tagged

Cat. No. CCL4L1-0641H Lot. No. (See product label)

SPECIFICATION

Product Overview	Human CCL4L1 full-length ORF (AAI48785.1, 1 a.a. - 92 a.a.) recombinant protein with GST-tag at N-terminal.
Species	Human
Source	Wheat Germ
Description	This gene is one of several cytokine genes that are clustered on the q-arm of chromosome 17. Cytokines are a family of secreted proteins that function in inflammatory and immunoregulatory processes. The protein encoded by this family member is similar to the chemokine (C-C motif) ligand 4 product, which inhibits HIV entry by binding to the cellular receptor CCR5. The copy number of this gene varies among individuals, where most individuals have one to five copies. Alternative splicing of this gene results in multiple transcript variants. [provided by RefSeq, Apr 2014]
Molecular Mass	37.07 kDa
AA Sequence	MKLCVTVLSLLVLVAAFCSLALSAPMGSDPPTACCFSTARKLPRNFVVDYYETSSL CSQPAVVFQTKRGKQVCADPSESWVQEYVVDLELN
Applications	Enzyme-linked Immunoabsorbent Assay Western Blot (Recombinant protein) Antibody Production Protein Array

 Tel: 1-631-559-9269 1-516-512-3133

 Email: info@creative-biomart.com  Fax: 1-631-938-8127

 45-1 Ramsey Road, Shirley, NY 11967, USA

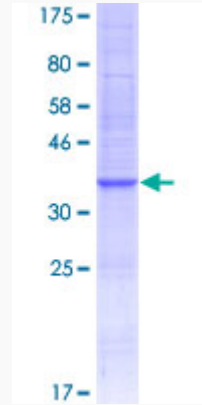
Storage	Store at -80 centigrade. Aliquot to avoid repeated freezing and thawing.
Storage Buffer	50 mM Tris-HCl, 10 mM reduced Glutathione, pH=8.0 in the elution buffer.
GENE INFORMATION	
Gene Name	CCL4L1 chemokine (C-C motif) ligand 4-like 1 [Homo sapiens]
Official Symbol	CCL4L1
Synonyms	CCL4L1; chemokine (C-C motif) ligand 4-like 1; CCL4L, chemokine (C C motif) ligand 4 like, SCYA4L, small inducible cytokine A4 like; C-C motif chemokine 4-like; AT744.2; LAG 1; MIP-1-beta; macrophage inflammatory protein-1b2; lymphocyte activation gene 1 protein; macrophage inflammatory protein 1-beta; monocyte adherence-induced protein 5-alpha; LAG1; CCL4L; LAG-1; SCYA4L;
Gene ID	388372
mRNA Refseq	NM_001001435
Protein Refseq	NP_001001435
MIM	603782
UniProt ID	Q8NHW4

 Tel: 1-631-559-9269 1-516-512-3133

 Email: info@creative-biomart.com  Fax: 1-631-938-8127

 45-1 Ramsey Road, Shirley, NY 11967, USA

**Quality Control
Testing**



12.5% SDS-PAGE Stained with Coomassie Blue.

 Tel: 1-631-559-9269 1-516-512-3133

 Email: info@creative-biomart.com  Fax: 1-631-938-8127

 45-1 Ramsey Road, Shirley, NY 11967, USA