

Recombinant Human CCL4L1 Protein (Ala24-Asn92), N-GST tagged

Cat. No. CCL4L1-1283H Lot. No. (See product label)

SPECIFICATION

Product Overview	Recombinant Human CCL4L1 (Ala24-Asn92) fused with the N-GST tag was expressed in E. coli.
Species	Human
Source	E.coli
ProteinLength	Ala24-Asn92
Form	Lyophilized powder/frozen liquid
Molecular Mass	34.63 kDa
Purity	>90% as determined by SDS-PAGE.
Notes	For research use only.
Storage	Use a manual defrost freezer and avoid repeated freeze thaw cycles. Store at 2 to 8 centigrade for one week. Store at -20 to -80 centigrade for twelve months from the date of receipt.
Storage Buffer	0.01M PBS, pH 7.4, 0.02% NLS
Reconstitution	Reconstitute in sterile water for a stock solution.

 Tel: 1-631-559-9269 1-516-512-3133

 Email: info@creative-biomart.com  Fax: 1-631-938-8127

 45-1 Ramsey Road, Shirley, NY 11967, USA

Shipping They are shipped out with dry ice/blue ice unless customers require otherwise.

GENE INFORMATION

Gene Name CCL4L1 chemokine (C-C motif) ligand 4-like 1 [Homo sapiens (human)]

Official Symbol CCL4L1

Synonyms CCL4L1; chemokine (C-C motif) ligand 4-like 1; CCL4L, chemokine (C C motif) ligand 4 like, SCYA4L, small inducible cytokine A4 like; C-C motif chemokine 4-like; AT744.2; LAG 1; MIP-1-beta; macrophage inflammatory protein-1b2; lymphocyte activation gene 1 protein; macrophage inflammatory protein 1-beta; monocyte adherence-induced protein 5-alpha; LAG1; CCL4L; LAG-1; SCYA4L;

Gene ID 9560

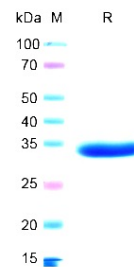
mRNA Refseq NM_001001435

Protein Refseq NP_001001435

MIM 603782

UniProt ID Q8NHW4

SDS-PAGE



 Tel: 1-631-559-9269 1-516-512-3133

 Email: info@creative-biomart.com  Fax: 1-631-938-8127

 45-1 Ramsey Road, Shirley, NY 11967, USA