

Active Recombinant Human CCL4L1 protein

Cat. No. CCL4L1-61H **Lot. No.** (See product label)

SPECIFICATION

Product Overview	Active Recombinant Human CCL4L1 protein(Q8NHW4)(24-92 aa) was expressed in E.coli.
Species	Human
Source	E.coli
ProteinLength	24-92 aa
Form	Lyophilized from a 0.2 µm filtered concentrated solution in PBS.
Bio-activity	Fully biologically active when compared to standard. The ED50 as determined by a cell proliferation assay using human CCR5 transfected murine BaF3 cells is less than 2.0 ng/ml, corresponding to a specific activity of > 5.0 × 10 ⁵ IU/mg.
Molecular Mass	Approximately 7.8 kDa, a single non-glycosylated polypeptide chain containing 69 amino acids.
AASequence	APMGSDPPTA CCFSYTARKL PRNFVVDYIE TSSLCSQPAV VFQTKRGKQV CADPSESWVQ EYVYDLELN
Endotoxin	Less than 0.1 EU/µg of rHuLAG-1/CCL4L1 as determined by LAL method.
Purity	>97% by SDS-PAGE and HPLC analyses.

 Tel: 1-631-559-9269 1-516-512-3133

 Email: info@creative-biomart.com  Fax: 1-631-938-8127

 45-1 Ramsey Road, Shirley, NY 11967, USA

Storage

Use a manual defrost freezer and avoid repeated freeze-thaw cycles. - 12 months from date of receipt, -20 to -70 °C as supplied. - 1 month, 2 to 8 °C under sterile conditions after reconstitution. - 3 months, -20 to -70 °C under sterile conditions after reconstitution.

Reconstitution

We recommend that this vial be briefly centrifuged prior to opening to bring the contents to the bottom. Reconstitute in sterile distilled water or aqueous buffer containing 0.1 % BSA to a concentration of 0.1-1.0 mg/mL. Stock solutions should be apportioned into working aliquots and stored at ≤ -20 °C. Further dilutions should be made in appropriate buffered solutions.

GENE INFORMATION

Gene Name

CCL4L1 chemokine (C-C motif) ligand 4-like 1 [Homo sapiens]

Official Symbol

CCL4L1

Synonyms

CCL4L1; chemokine (C-C motif) ligand 4-like 1; CCL4L, chemokine (C C motif) ligand 4 like , SCYA4L, small inducible cytokine A4 like; C-C motif chemokine 4-like; AT744.2; LAG 1; MIP-1-beta; macrophage inflammatory protein-1b2; lymphocyte activation gene 1 protein; macrophage inflammatory protein 1-beta; monocyte adherence-induced protein 5-alpha; LAG1; CCL4L; LAG-1; SCYA4L;

Gene ID

9560

mRNA Refseq

NM_001001435

Protein Refseq

NP_001001435

MIM

603782

 Tel: 1-631-559-9269 1-516-512-3133

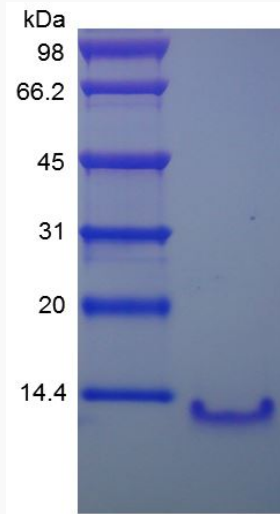
 Email: info@creative-biomart.com  Fax: 1-631-938-8127

 45-1 Ramsey Road, Shirley, NY 11967, USA

UniProt ID

Q8NHW4

SDS-PAGE



 Tel: 1-631-559-9269 1-516-512-3133

 Email: info@creative-biomart.com  Fax: 1-631-938-8127

 45-1 Ramsey Road, Shirley, NY 11967, USA