

Recombinant Human CCL4L1 protein, His & GST-tagged

Cat. No. CCL4L1-7904H Lot. No. (See product label)

SPECIFICATION

Product Overview	Recombinant Human CCL4L1 aa. (Ala24~Asn92 (Accession # Q8NHW4)) fused with N-terminal His & GST tag was produced in E. coli cells.
Species	Human
Source	E.coli
ProteinLength	Ala24~Asn92
Description	<p>This gene is one of several cytokine genes that are clustered on the q-arm of chromosome 17. Cytokines are a family of secreted proteins that function in inflammatory and immunoregulatory processes. The protein encoded by this family member is similar to the chemokine (C-C motif) ligand 4 product, which inhibits HIV entry by binding to the cellular receptor CCR5. The copy number of this gene varies among individuals, where most individuals have one to five copies. Alternative splicing of this gene results in multiple transcript variants.</p>
Form	Freeze-dried powder
Molecular Mass	Predicted Molecular Mass: 40.2kDa
Endotoxin	<1.0EU per 1ug (determined by the LAL method)
Purity	>95%

 Tel: 1-631-559-9269 1-516-512-3133

 Email: info@creative-biomart.com  Fax: 1-631-938-8127

 45-1 Ramsey Road, Shirley, NY 11967, USA

Characteristic	The isoelectric point is 6.1.
Applications	SDS-PAGE; WB; ELISA; IP
Stability	The thermal stability is described by the loss rate of the target protein. The loss rate was determined by accelerated thermal degradation test, that is, incubate the protein at 37°C for 48h, and no obvious degradation and precipitation were observed. (Referring from China Biological Products Standard, which was calculated by the Arrhenius equation.) The loss of this protein is less than 5% within the expiration date under appropriate storage condition.
Storage	Avoid repeated freeze/thaw cycles. Store at 2-8°C for one month. Aliquot and store at -80°C for 12 months.
Storage Buffer	Supplied as lyophilized form in PBS, pH7.4, containing 5% trehalose, 0.01% sarcosyl.
Reconstitution	Reconstitute in sterile PBS, pH7.2-pH7.4.

GENE INFORMATION

Gene Name	CCL4L1 C-C motif chemokine ligand 4 like 1 [Homo sapiens (human)]
Official Symbol	CCL4L1
Synonyms	CCL4L1; C-C motif chemokine ligand 4 like 1; LAG1; CCL4L; LAG-1; SCYA4L; AT744.2; SCYA4L1; SCYA4L2; MIP-1-beta; C-C motif chemokine 4-like; CC chemokine ligand 4L1; Lymphocyte activation gene 1 protein; Macrophage inflammatory protein 1-beta; Monocyte adherence-induced protein 5-alpha; Small-inducible cytokine A4-like; chemokine (C-C motif) ligand 4-like 1, telomeric; macrophage inflammatory protein-1b2; small inducible cytokine A4-like

 Tel: 1-631-559-9269 1-516-512-3133

 Email: info@creative-biomart.com  Fax: 1-631-938-8127

 45-1 Ramsey Road, Shirley, NY 11967, USA

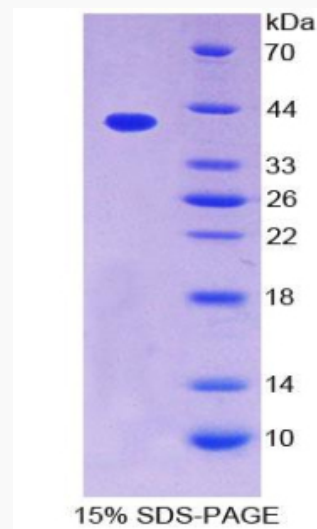
Gene ID 388372

mRNA Refseq NM_207007.3

Protein Refseq NP_996890.1

UniProt ID Q8NHW4

SDS-PAGE



 Tel: 1-631-559-9269 1-516-512-3133

 Email: info@creative-biomart.com  Fax: 1-631-938-8127

 45-1 Ramsey Road, Shirley, NY 11967, USA