

Recombinant Human CCL5 Protein (Ser24-Ser91), C-Fc and His tagged

Cat. No. CCL5-1081H Lot. No. (See product label)

SPECIFICATION

Product Overview	Recombinant human CCL5 (Ser24-Ser91) fused with the C-terminal Fc and His Tag was expressed in Mammalian cells.
Species	Human
Source	Mammalian Cells
ProteinLength	Ser24-Ser91
Form	Lyophilized powder/frozen liquid
Molecular Mass	32.48 kDa
Purity	>90% as determined by SDS-PAGE.
Notes	For research use only.
Storage	Use a manual defrost freezer and avoid repeated freeze thaw cycles. Store at 2 to 8 centigrade for one week. Store at -20 to -80 centigrade for twelve months from the date of receipt.
Storage Buffer	Supplied as solution form in PBS or lyophilized from PBS.
Reconstitution	Reconstitute in sterile water for a stock solution.

 Tel: 1-631-559-9269 1-516-512-3133

 Email: info@creative-biomart.com  Fax: 1-631-938-8127

 45-1 Ramsey Road, Shirley, NY 11967, USA

Shipping They are shipped out with dry ice/blue ice unless customers require otherwise.

GENE INFORMATION

Gene Name CCL5 chemokine (C-C motif) ligand 5 [Homo sapiens (human)]

Official Symbol CCL5

Synonyms

CCL5; chemokine (C-C motif) ligand 5; D17S136E, SCYA5, small inducible cytokine A5 (RANTES); C-C motif chemokine 5; beta chemokine RANTES; MGC17164; RANTES; regulated upon activation; normally T expressed; and presumably secreted; SIS delta; SISd; small inducible cytokine subfamily A (Cys Cys); member 5; T cell specific protein p288; T cell specific RANTES protein; TCP228; eoCP; SIS-delta; beta-chemokine RANTES; small-inducible cytokine A5; T-cell specific protein p288; t cell-specific protein P228; T-cell-specific protein RANTES; eosinophil chemotactic cytokine; small inducible cytokine A5 (RANTES); small inducible cytokine subfamily A (Cys-Cys), member 5; regulated upon activation, normally T-expressed, and presumably secreted; SCYA5; D17S136E;

Gene ID 6352

mRNA Refseq NM_002985

Protein Refseq NP_002976

MIM 187011

UniProt ID P13501

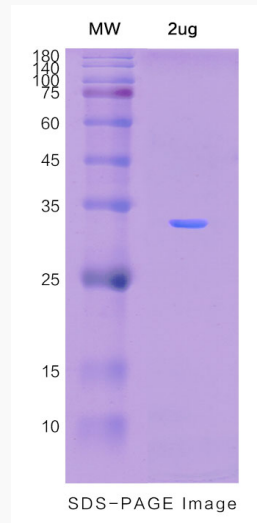
 Tel: 1-631-559-9269 1-516-512-3133

 Email: info@creative-biomart.com  Fax: 1-631-938-8127

 45-1 Ramsey Road, Shirley, NY 11967, USA



SDS-PAGE



Tel: 1-631-559-9269 1-516-512-3133

Email: info@creative-biomart.com Fax: 1-631-938-8127

45-1 Ramsey Road, Shirley, NY 11967, USA