

Recombinant Bovine Chemokine (C-C motif) Ligand 5

Cat. No. CCL5-132B Lot. No. (See product label)

SPECIFICATION

Product Overview	Recombinant Bovine CCL5 protein was expressed in Yeast and purified by using Ion-exchange chromatography, 7.9 kDa (68 aa).
Species	Bovine
Source	Yeast
Description	CCL5 is an 8kDa protein classified as a chemotactic cytokine or chemokine. CCL5 is chemotactic for T cells, eosinophils, and basophils, and plays an active role in recruiting leukocytes into inflammatory sites. With the help of particular cytokines (i.e., IL-2 and IFN- γ) that are released by T cells, CCL5 also induces the proliferation and activation of certain natural-killer (NK) cells to form CHAK (CC-Chemokine-activated killer) cells.
Sequences Of Amino Acids	SPYASDTTPC CFAYISRPLP RTHVQEYFYT SSKCSMAAVV FITRKNRQVC ANPEKKWVRE YINALELS.
Formulation/Reconstitution	Lyophilized. Reconstitute with sterile phosphate-buffered saline containing at least 0.1% carrier protein.
Purity	>95% as visualized by SDS-PAGE analysis.
Purification	Ion-exchange chromatography.
Biological Activity	In testing.

 Tel: 1-631-559-9269 1-516-512-3133

 Email: info@creative-biomart.com  Fax: 1-631-938-8127

 45-1 Ramsey Road, Shirley, NY 11967, USA

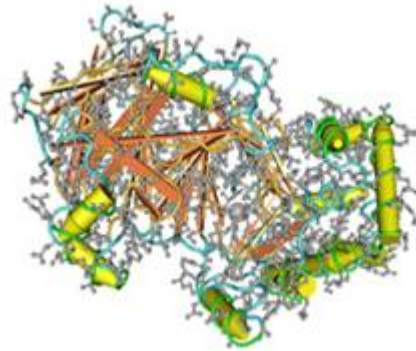
Storage	Stable for up to twelve months from date of receipt at -20°C. Stable for at least 3 months when stored in working aliquots with a carrier protein at -20°C. Avoid repeated freeze/thaw cycles.
Pathways	Chemokine signaling pathway; Cytokine-cytokine receptor interaction; Cytosolic DNA-sensing pathway; NOD-like receptor signaling pathway; Prion diseases; Toll-like receptor signaling pathway
GENE INFORMATION	
Gene Name	CCL5 chemokine (C-C motif) ligand 5 [Bos taurus]
Synonyms	CCL5; chemokine (C-C motif) ligand 5; RANTES; MGC127014; C-C motif chemokine 5; SIS-delta; small-inducible cytokine A5; T-cell-specific protein RANTES
Gene ID	327712
mRNA Refseq	NM_175827
Protein Refseq	NP_787021
UniProt ID	O97919
Chromosome Location	19
Function	chemoattractant activity; chemokine activity

 Tel: 1-631-559-9269 1-516-512-3133

 Email: info@creative-biomart.com  Fax: 1-631-938-8127

 45-1 Ramsey Road, Shirley, NY 11967, USA

PDB rendering based on
1pmi



 Tel: 1-631-559-9269 1-516-512-3133

 Email: info@creative-biomart.com  Fax: 1-631-938-8127

 45-1 Ramsey Road, Shirley, NY 11967, USA