

# Recombinant Human CCL5 Protein (Ser24-Ser91), N-GST tagged

**Cat. No.** CCL5-1464H    **Lot. No.** (See product label)

## SPECIFICATION

<b>Product Overview</b>	Recombinant Human CCL5/RANTES (Ser24-Ser91) fused with the N-GST tag was expressed in E. coli.
<b>Species</b>	Human
<b>Source</b>	E.coli
<b>ProteinLength</b>	Ser24-Ser91
<b>Form</b>	Lyophilized powder/frozen liquid
<b>Molecular Mass</b>	34.68 kDa
<b>Purity</b>	>90% as determined by SDS-PAGE.
<b>Notes</b>	For research use only.
<b>Storage</b>	Use a manual defrost freezer and avoid repeated freeze thaw cycles. Store at 2 to 8 centigrade for one week. Store at -20 to -80 centigrade for twelve months from the date of receipt.
<b>Storage Buffer</b>	Lyophilized from PBS, pH 7.4, 0.02% NLS, 1mM EDTA, 4% trehalose, 1% mannitol.
<b>Reconstitution</b>	Reconstitute in sterile water for a stock solution.

 Tel: 1-631-559-9269    1-516-512-3133

 Email: [info@creative-biomart.com](mailto:info@creative-biomart.com)     Fax: 1-631-938-8127

 45-1 Ramsey Road, Shirley, NY 11967, USA

**Shipping** They are shipped out with dry ice/blue ice unless customers require otherwise.

## GENE INFORMATION

**Gene Name** CCL5 chemokine (C-C motif) ligand 5 [ Homo sapiens (human) ]

**Official Symbol** CCL5

**Synonyms**

CCL5; chemokine (C-C motif) ligand 5; D17S136E, SCYA5, small inducible cytokine A5 (RANTES); C-C motif chemokine 5; beta chemokine RANTES; MGC17164; RANTES; regulated upon activation; normally T expressed; and presumably secreted; SIS delta; SISd; small inducible cytokine subfamily A (Cys Cys); member 5; T cell specific protein p288; T cell specific RANTES protein; TCP228; eoCP; SIS-delta; beta-chemokine RANTES; small-inducible cytokine A5; T-cell specific protein p288; t cell-specific protein P228; T-cell-specific protein RANTES; eosinophil chemotactic cytokine; small inducible cytokine A5 (RANTES); small inducible cytokine subfamily A (Cys-Cys), member 5; regulated upon activation, normally T-expressed, and presumably secreted; SCYA5; D17S136E;

**Gene ID** 6352

**mRNA Refseq** NM\_002985

**Protein Refseq** NP\_002976

**MIM** 187011

**UniProt ID** P13501

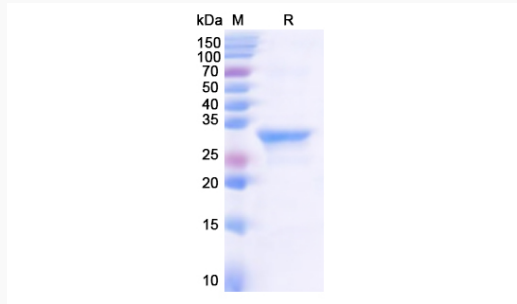
 Tel: 1-631-559-9269 1-516-512-3133

 Email: [info@creative-biomart.com](mailto:info@creative-biomart.com)  Fax: 1-631-938-8127

 45-1 Ramsey Road, Shirley, NY 11967, USA



**SDS-PAGE**



Tel: 1-631-559-9269 1-516-512-3133

Email: [info@creative-biomart.com](mailto:info@creative-biomart.com) Fax: 1-631-938-8127

45-1 Ramsey Road, Shirley, NY 11967, USA