

Recombinant Swine Chemokine (C-C motif) Ligand 5

Cat. No. CCL5-147S **Lot. No.** (See product label)

SPECIFICATION

Product Overview	Recombinant Swine CCL5 protein was expressed in Yeast and purified by using Ion-exchange chromatography, 7.9 kDa (68 aa).
Species	Pig
Source	Yeast
Description	CCL5 is an 8kDa protein classified as a chemotactic cytokine or chemokine. CCL5 is chemotactic for T cells, eosinophils, and basophils, and plays an active role in recruiting leukocytes into inflammatory sites. With the help of particular cytokines (i.e., IL-2 and IFN- γ) that are released by T cells, CCL5 also induces the proliferation and activation of certain natural-killer (NK) cells to form CHAK (CC-Chemokine-activated killer) cells.
Sequences Of Amino Acids	SPYASDTTPC CFSYLSRPLP RAHLQEYFYT SSKCSMAAVV FITRKNRQVC ANPEKKWVRE YINTLEMS.
Formulation/ Reconstitution	Lyophilized. Reconstitute with sterile phosphate-buffered saline containing at least 0.1% carrier protein.
Purity	>95% as visualized by SDS-PAGE analysis.
Purification	Ion-exchange chromatography.
Biological Activity	The biological activity of recombinant swine CCL5 was determined in a chemotaxis

 Tel: 1-631-559-9269 1-516-512-3133

 Email: info@creative-biomart.com  Fax: 1-631-938-8127

 45-1 Ramsey Road, Shirley, NY 11967, USA

assay using a Boyden chamber with freshly isolated swine PBMC monocytes using a Percoll gradient enrichment method. Biological activity typically peaks at 100 ng/mL.

Storage

Stable for up to twelve months from date of receipt at -20°C. Stable for at least 3 months when stored in working aliquots with a carrier protein at -20°C. Avoid repeated freeze/thaw cycles.

Pathways

Chemokine signaling pathway; Cytokine-cytokine receptor interaction; Cytosolic DNA-sensing pathway; NOD-like receptor signaling pathway; Prion diseases; Toll-like receptor signaling pathway

GENE INFORMATION

Gene Name

CCL5 chemokine (C-C motif) ligand 5 [*Sus scrofa*]

Synonyms

CCL5; chemokine (C-C motif) ligand 5; RANTES

Gene ID

396613

mRNA Refseq

NM_001129946

Protein Refseq

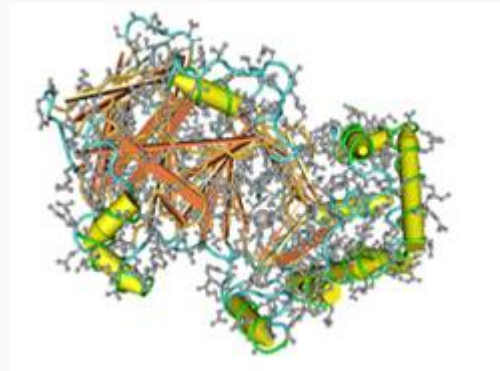
NP_001123418

 Tel: 1-631-559-9269 1-516-512-3133

 Email: info@creative-biomart.com  Fax: 1-631-938-8127

 45-1 Ramsey Road, Shirley, NY 11967, USA

PDB rendering based
on 1pmi



 Tel: 1-631-559-9269 1-516-512-3133

 Email: info@creative-biomart.com  Fax: 1-631-938-8127

 45-1 Ramsey Road, Shirley, NY 11967, USA