

Recombinant Human CCL5 protein

Cat. No. CCL5-301H **Lot. No.** (See product label)

SPECIFICATION

Product Overview	Recombinant Human CCL5 protein(NP_002976.2) (Ser24-Ser91) was expressed in E. coli with an initial Met.
Species	Human
Source	E. coli
ProteinLength	24-91 aa
Form	Lyophilized from sterile PBS, pH 7.4.
Molecular Mass	The recombinant human CCL5 consists 69 amino acids and predicts a molecular mass of 8 kDa.
Purity	> 95 % as determined by SDS-PAGE
Storage	Store it under sterile conditions at -20°C to -80°C upon receiving. Recommend to aliquot the protein into smaller quantities for optimal storage. Avoid repeated freeze-thaw cycles.
Reconstitution	It is recommended that sterile water be added to the vial to prepare a stock solution of 0.2 ug/ul. Centrifuge the vial at 4°C before opening to recover the entire contents.
protein Refseq-Weblink	http://www.ncbi.nlm.nih.gov/protein/NP_002976.2

 Tel: 1-631-559-9269 1-516-512-3133

 Email: info@creative-biomart.com  Fax: 1-631-938-8127

 45-1 Ramsey Road, Shirley, NY 11967, USA

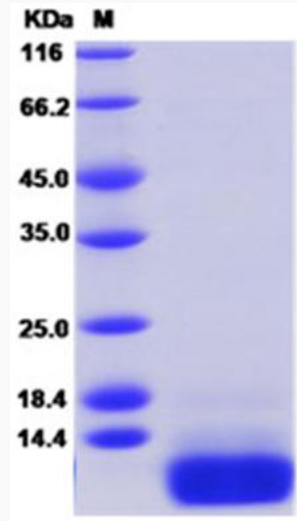
Unit ID	P13501
Unit ID-Weblink	http://www.uniprot.org/uniprot/P13501
GENE INFORMATION	
Gene Name	CCL5 chemokine (C-C motif) ligand 5 [Homo sapiens]
Official Symbol	CCL5
Synonyms	CCL5; chemokine (C-C motif) ligand 5; D17S136E, SCYA5, small inducible cytokine A5 (RANTES); C-C motif chemokine 5; beta chemokine RANTES; MGC17164; RANTES; regulated upon activation; normally T expressed; and presumably secreted; SIS delta; SISd; small inducible cytokine subfamily A (Cys Cys); member 5; T cell specific protein p288; T cell specific RANTES protein; TCP228; eoCP; SIS-delta; beta-chemokine RANTES; small-inducible cytokine A5; T-cell specific protein p288; t cell-specific protein P228; T-cell-specific protein RANTES; eosinophil chemotactic cytokine; small inducible cytokine A5 (RANTES); small inducible cytokine subfamily A (Cys-Cys), member 5; regulated upon activation, normally T-expressed, and presumably secreted; SCYA5; D17S136E;
Gene ID	6352
mRNA Refseq	NM_002985
protein Refseq	NP_002976
MIM	187011

 Tel: 1-631-559-9269 1-516-512-3133

 Email: info@creative-biomart.com  Fax: 1-631-938-8127

 45-1 Ramsey Road, Shirley, NY 11967, USA

SDS-PAGE



 Tel: 1-631-559-9269 1-516-512-3133

 Email: info@creative-biomart.com  Fax: 1-631-938-8127

 45-1 Ramsey Road, Shirley, NY 11967, USA