

Recombinant Human CCL5 protein, His,SUMO-tagged

Cat. No. CCL5-3533H Lot. No. (See product label)

SPECIFICATION

Product Overview	Recombinant Human CCL5 protein(P13501)(Ser24-Ser91), fused with N-terminal His,SUMO tag, was expressed in E.coli.
Species	Human
Source	E.coli
ProteinLength	Ser24-Ser91
Tag	N-His,SUMO
Form	Lyophilized from 0.22µm filtered solution in 20mM Tris,0.3M NaCl (pH 8.5). Normally 8% trehalose is added as protectant before lyophilization.
Bio-activity	Immobilized Human CCL5, His Tag at 0.5µg/ml (100µl/well) on the plate. Dose response curve for Anti-CCL5 Antibody, hFc Tag with the EC50 of 4.4ng/ml determined by ELISA (QC Test).
Molecular Mass	The protein has a predicted MW of 21 kDa. Due to the protein can cleaved into two chains, so it migrates to 15-18 kDa and 22-25 kDa based on Tris-Bis PAGE result.
Endotoxin	Less than 1EU per µg by the LAL method.
Purity	> 95% as determined by Tris-Bis PAGE

 Tel: 1-631-559-9269 1-516-512-3133

 Email: info@creative-biomart.com  Fax: 1-631-938-8127

 45-1 Ramsey Road, Shirley, NY 11967, USA

Storage	Reconstituted protein stable at -80°C for 12 months, 4°C for 1 week. Use a manual defrost freezer and avoid repeated freeze-thaw cycles.
Reconstitution	Centrifuge tubes before opening. Reconstituting to a concentration more than 100 µg/ml is recommended. Dissolve the lyophilized protein in distilled water.
GENE INFORMATION	
Gene Name	CCL5 chemokine (C-C motif) ligand 5 [Homo sapiens]
Official Symbol	CCL5
Synonyms	CCL5; chemokine (C-C motif) ligand 5; D17S136E, SCYA5, small inducible cytokine A5 (RANTES); C-C motif chemokine 5; beta chemokine RANTES; MGC17164; RANTES; regulated upon activation; normally T expressed; and presumably secreted; SIS delta; SISd; small inducible cytokine subfamily A (Cys Cys); member 5; T cell specific protein p288; T cell specific RANTES protein; TCP228; eoCP; SIS-delta; beta-chemokine RANTES; small-inducible cytokine A5; T-cell specific protein p288; t cell-specific protein P228; T-cell-specific protein RANTES; eosinophil chemotactic cytokine; small inducible cytokine A5 (RANTES); small inducible cytokine subfamily A (Cys-Cys), member 5; regulated upon activation, normally T-expressed, and presumably secreted; SCYA5; D17S136E;
Gene ID	6352
mRNA Refseq	NM_002985
Protein Refseq	NP_002976
MIM	187011

 Tel: 1-631-559-9269 1-516-512-3133

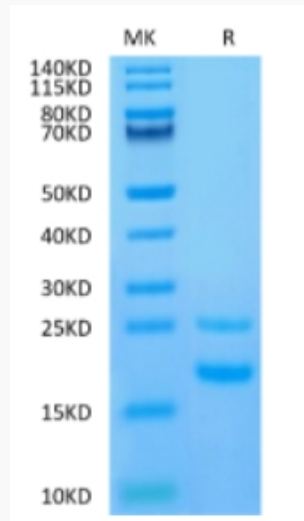
 Email: info@creative-biomart.com  Fax: 1-631-938-8127

 45-1 Ramsey Road, Shirley, NY 11967, USA

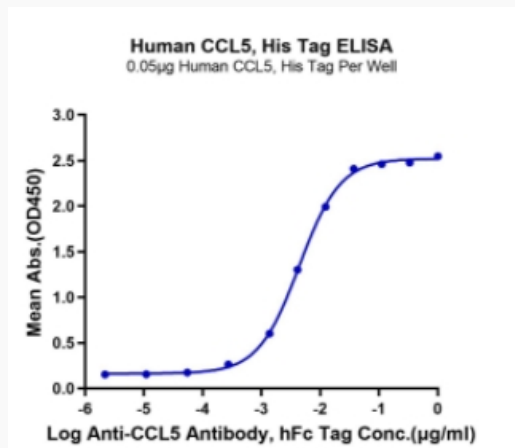
UniProt ID

P13501

Tris-Bis PAGE



ELISA Data



Tel: 1-631-559-9269 1-516-512-3133

Email: info@creative-biomart.com Fax: 1-631-938-8127

45-1 Ramsey Road, Shirley, NY 11967, USA