

Recombinant Human chemokine (C-C motif) ligand 5, His-tagged

Cat. No. CCL5-61H Lot. No. (See product label)

SPECIFICATION

Product Overview	Recombinant Human CCL5 comprises a 68 amino acid fragment (24-91) corresponding to the mature RANTES protein and is expressed in E. coli with an amino-terminal hexahistidine tag.
Species	Human
Source	E.coli
ProteinLength	24-91 a.a.
Description	CCL5 (acronym for Regulated upon Activation, Normal T-cell Expressed, and presumably Secreted) is a member of the beta (CC) chemokine subfamily and is predominantly produced from T cells and platelets. RANTES has been shown to be a chemoattractant factor for monocytes, CD4+/CD45RO+ T lymphocytes and basophils. It has also been shown to induce the proliferation and activation of killer cells and may act as a HIV suppressive factor.
Purity	>95% by SDS-PAGE
Form	Liquid
Storage	Store at 4°C if entire vial will be used within 2-4 weeks. Store, frozen at -20°C for longer periods of time. Please avoid freeze thaw cycles.

 Tel: 1-631-559-9269 1-516-512-3133

 Email: info@creative-biomart.com  Fax: 1-631-938-8127

 45-1 Ramsey Road, Shirley, NY 11967, USA

GENE INFORMATION

Gene Name CCL5 chemokine (C-C motif) ligand 5 [Homo sapiens]

Synonyms CCL5; D17S136E; MGC17164; RANTES; SCYA5; SISd; TCP228; chemokine (C-C motif) ligand 5; small inducible cytokine A5; SIS-delta; beta-chemokine RANTES; T-cell specific protein p288; T-cell specific RANTES protein; small inducible cytokine A5 (RANTES); small inducible cytokine subfamily A (Cys-Cys), member 5; regulated upon activation, normally T-expressed, and presumably secreted; CCL5; Chemokine (C-C motif) ligand 5; T-cell specific RANTES protein; T-cell; specific protein P288; beta chemokine RANTES precursor; SIS delta; EoCP; Eosinophil-chemotactic cytokine; T-cell specific RANTES protein; T-cell-specific protein RANTES; small inducible cytokine A5.

Gene ID 6352

mRNA Refseq NM_002985

Protein Refseq NP_002976

MIM 187011

UniProt ID P13501

Chromosome Location 17q11.2-q12

Pathway Cytokine-cytokine receptor interaction; Epithelial cell signaling in Helicobacter pylori infection; Toll-like receptor signaling pathway; :Signaling by GPCR

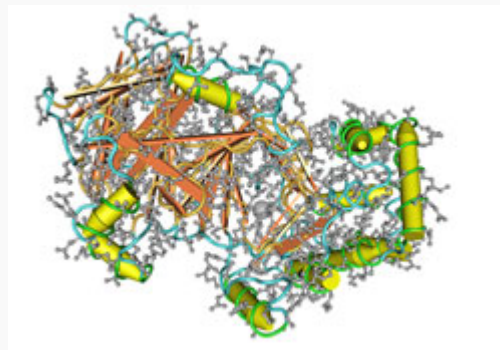
Function chemoattractant activity; chemokine activity; signal transducer activity

 Tel: 1-631-559-9269 1-516-512-3133

 Email: info@creative-biomart.com  Fax: 1-631-938-8127

 45-1 Ramsey Road, Shirley, NY 11967, USA

**PDBrendering based
on 1pmi. Available
structures:1b3a,1eqt,1h**



 Tel: 1-631-559-9269 1-516-512-3133

 Email: info@creative-biomart.com  Fax: 1-631-938-8127

 45-1 Ramsey Road, Shirley, NY 11967, USA