

Recombinant Human CCL7 Protein, GST-Tagged

Cat. No. CCL7-0643H **Lot. No.** (See product label)

SPECIFICATION

Product Overview	Human CCL7 full-length ORF (NP_006264.2, 1 a.a. - 99 a.a.) recombinant protein with GST-tag at N-terminal.
Species	Human
Source	Wheat Germ
Description	This gene encodes monocyte chemotactic protein 3, a secreted chemokine which attracts macrophages during inflammation and metastasis. It is a member of the C-C subfamily of chemokines which are characterized by having two adjacent cysteine residues. The protein is an in vivo substrate of matrix metalloproteinase 2, an enzyme which degrades components of the extracellular matrix. This gene is part of a cluster of C-C chemokine family members on chromosome 17q. [provided by RefSeq, Jul 2008]
Molecular Mass	37.6 kDa
AA Sequence	MKASAALLCLLLTAAAFSPQGLAQPVGINTSTTCCYRFINKKIPKQRLESYRRTTSSH CPREAVIFKTKLDKEICADPTQKWVQDFMKHLDKKTQTPKL
Applications	Enzyme-linked Immunoabsorbent Assay Western Blot (Recombinant protein) Antibody Production Protein Array

 Tel: 1-631-559-9269 1-516-512-3133

 Email: info@creative-biomart.com  Fax: 1-631-938-8127

 45-1 Ramsey Road, Shirley, NY 11967, USA

Storage Store at -80 centigrade. Aliquot to avoid repeated freezing and thawing.

Storage Buffer 50 mM Tris-HCl, 10 mM reduced Glutathione, pH=8.0 in the elution buffer.

GENE INFORMATION

Gene Name CCL7 chemokine (C-C motif) ligand 7 [Homo sapiens]

Official Symbol CCL7

Synonyms

CCL7; chemokine (C-C motif) ligand 7; SCYA6, SCYA7, small inducible cytokine A7 (monocyte chemotactic protein 3); C-C motif chemokine 7; FIC; MARC; MCP 3; MCP3; monocyte chemoattractant protein 3; monocyte chemotactic protein 3; NC28; small-inducible cytokine A7; small inducible cytokine A7 (monocyte chemotactic protein 3); MCP-3; SCYA6; SCYA7; MGC138463; MGC138465;

Gene ID 6354

mRNA Refseq NM_006273

Protein Refseq NP_006264

MIM 158106

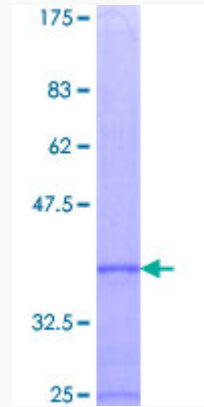
UniProt ID P80098

 Tel: 1-631-559-9269 1-516-512-3133

 Email: info@creative-biomart.com  Fax: 1-631-938-8127

 45-1 Ramsey Road, Shirley, NY 11967, USA

**Quality Control
Testing**



12.5% SDS-PAGE Stained with Coomassie Blue.

 Tel: 1-631-559-9269 1-516-512-3133

 Email: info@creative-biomart.com  Fax: 1-631-938-8127

 45-1 Ramsey Road, Shirley, NY 11967, USA