

Recombinant Human CCL7 protein

Cat. No. CCL7-286H **Lot. No.** (See product label)

SPECIFICATION

Product Overview	Recombinant Human CCL7 protein was expressed in Escherichia coli.
Species	Human
Source	E.coli
ProteinLength	76
Description	Human CCL7, also known as monocyte chemotactic protein 3 (MCP-3), is belonging to the CC chemokine family. MCP-3 has two homogeneous MCP-1 (CCL2) and MCP-2 (CCL8). These three MCPs were found by IL-1-beta triggered human MG-63 osteosarcoma cells. CCL7 shares 71 % and 58 % a.a. sequence identity with MCP-1 and MCP-2, respectively. CCL7 has chemotactic function for monocytes and eosinophils, but not for neutrophils. In addition, it can also chemoattract activated NK cells.
Form	Lyophilized from a 0.2µm filtered concentrated solution in 20 mM PB, pH 7.4, 150 mM NaCl.
Bio-activity	Fully biologically active when compared to standard. The biologically active determined by a chemotaxis bioassay using human monocytes is in a concentration range of 10-100 ng/ml.
Molecular Mass	Approximately 9.0 kDa, a single, non-glycosylated polypeptide chain containing 76 amino acids.

 Tel: 1-631-559-9269 1-516-512-3133

 Email: info@creative-biomart.com  Fax: 1-631-938-8127

 45-1 Ramsey Road, Shirley, NY 11967, USA

AA Sequence	QPVGINTSTTCCYRFINKKIPKQRLESYRRTTSSHCPREAVIFKTKLDKEICADPTQK WVQDFMKHLDKKTQTPKL
Endotoxin	Less than 1 EU/μg of rHuMCP-3/CCL7 as determined by LAL method.
Purity	>97% by SDS-PAGE and HPLC analysis.
Storage	Use a manual defrost freezer and avoid repeated freeze-thaw cycles. 12 months from date of receipt, -20 to -70 centigrade as supplied. 1 month, 2 to 8 centigrade under sterile conditions after reconstitution. 3 months, -20 to -70 centigrade under sterile conditions after reconstitution.
Reconstitution	We recommend that this vial be briefly centrifuged prior to opening to bring the contents to the bottom. Reconstitute in sterile distilled water or aqueous buffer containing 0.1 % BSA to a concentration of 0.1-1.0 mg/mL. Stock solutions should be apportioned into working aliquots and stored at ≤-20 centigrade. Further dilutions should be made in appropriate buffered solutions.

GENE INFORMATION

Gene Name	CCL7
Official Symbol	CCL7
Synonyms	CCL7; chemokine (C-C motif) ligand 7; SCYA6, SCYA7, small inducible cytokine A7 (monocyte chemotactic protein 3); C-C motif chemokine 7; FIC; MARC; MCP 3; MCP3; monocyte chemoattractant protein 3; monocyte chemotactic protein 3; NC28; small-inducible cytokine A7; small inducible cytokine A7 (monocyte chemotactic protein 3); MCP-3; SCYA6; SCYA7; MGC138463; MGC138465;
Gene ID	6354

 Tel: 1-631-559-9269 1-516-512-3133

 Email: info@creative-biomart.com  Fax: 1-631-938-8127

 45-1 Ramsey Road, Shirley, NY 11967, USA

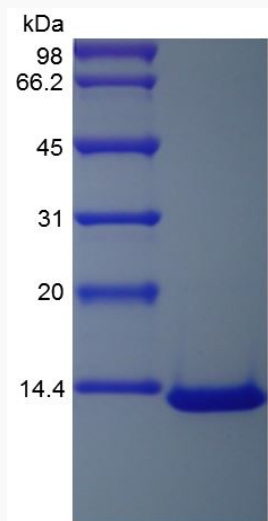
mRNA Refseq [NM_006273](#)

Protein Refseq [NP_006264](#)

MIM [158106](#)

UniProt ID [P80098](#)

**SDS-PAGE of CCL7-
286H**



 Tel: 1-631-559-9269 1-516-512-3133

 Email: info@creative-biomart.com  Fax: 1-631-938-8127

 45-1 Ramsey Road, Shirley, NY 11967, USA