

Recombinant Human CCL8 protein, SUMO-tagged

Cat. No. CCL8-198H Lot. No. (See product label)

SPECIFICATION

Product Overview	Recombinant Human CCL8 protein(P80075-1) (Gln 24- 99) was expressed in E. coli, fused with the SUMO tag at the N-terminus.
Species	Human
Source	E. coli
ProteinLength	24-99 aa
Form	Lyophilized from sterile PBS, pH 7.4.
Molecular Mass	The recombinant human CCL8 consisting of 187 amino acids and has a calculated molecular mass of 21.7 kDa. The apparent molecular mass of the protein is approximately 30 kDa in SDS-PAGE under reducing conditions.
Purity	> 90 % as determined by SDS-PAGE
Storage	Store it under sterile conditions at -20°C to -80°C upon receiving. Recommend to aliquot the protein into smaller quantities for optimal storage. Avoid repeated freeze-thaw cycles.
Reconstitution	It is recommended that sterile water be added to the vial to prepare a stock solution of 0.2 ug/ul. Centrifuge the vial at 4°C before opening to recover the entire contents.
protein Refseq-	http://www.ncbi.nlm.nih.gov/protein/NP_005614.2

 Tel: 1-631-559-9269 1-516-512-3133

 Email: info@creative-biomart.com  Fax: 1-631-938-8127

 45-1 Ramsey Road, Shirley, NY 11967, USA

Weblink
Unit ID P80075

Unit ID-Weblink <http://www.uniprot.org/uniprot/P80075>
GENE INFORMATION
Gene Name CCL8 chemokine (C-C motif) ligand 8 [Homo sapiens]

Official Symbol CCL8

Synonyms

CCL8; chemokine (C-C motif) ligand 8; SCYA8, small inducible cytokine subfamily A (Cys Cys), member 8 (monocyte chemotactic protein 2); C-C motif chemokine 8; HC14; MCP 2; small-inducible cytokine A8; monocyte chemotactic protein 2; monocyte chemoattractant protein 2; small inducible cytokine subfamily A (Cys-Cys), member 8 (monocyte chemotactic protein 2); MCP2; MCP-2; SCYA8; SCYA10;

Gene ID 6355

mRNA Refseq [NM_005623](#)
protein Refseq NP_005614

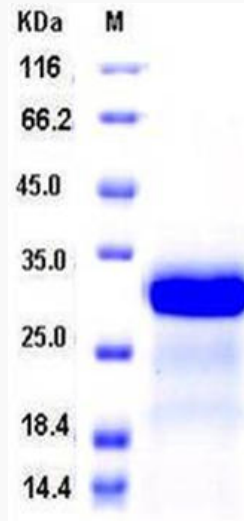
MIM 602283

 Tel: 1-631-559-9269 1-516-512-3133

 Email: info@creative-biomart.com  Fax: 1-631-938-8127

 45-1 Ramsey Road, Shirley, NY 11967, USA

SDS-PAGE



 Tel: 1-631-559-9269 1-516-512-3133

 Email: info@creative-biomart.com  Fax: 1-631-938-8127

 45-1 Ramsey Road, Shirley, NY 11967, USA