

## Recombinant Human CCL8 protein, His-tagged

Cat. No. CCL8-313H Lot. No. (See product label)

### SPECIFICATION

<b>Product Overview</b>	Recombinant Human CCL8 protein(NP_005614.2) (Gln24-99) was expressed in Yeast with a polyhistidine tag at the C-terminus.
<b>Species</b>	Human
<b>Source</b>	Yeast
<b>ProteinLength</b>	24-99 aa
<b>Form</b>	Lyophilized from sterile PBS, pH 7.4.
<b>Molecular Mass</b>	The recombinant human CCL8 consists of 86 amino acids and predicts a molecular mass of 10.3 kDa.
<b>Purity</b>	> 95 % as determined by SDS-PAGE
<b>Storage</b>	Store it under sterile conditions at -20°C to -80°C upon receiving. Recommend to aliquot the protein into smaller quantities for optimal storage. Avoid repeated freeze-thaw cycles.
<b>Reconstitution</b>	It is recommended that sterile water be added to the vial to prepare a stock solution of 0.2 ug/ul. Centrifuge the vial at 4°C before opening to recover the entire contents.
<b>protein Refseq-Weblink</b>	<a href="http://www.ncbi.nlm.nih.gov/protein/NP_005614.2">http://www.ncbi.nlm.nih.gov/protein/NP_005614.2</a>

 Tel: 1-631-559-9269 1-516-512-3133

 Email: [info@creative-biomart.com](mailto:info@creative-biomart.com)  Fax: 1-631-938-8127

 45-1 Ramsey Road, Shirley, NY 11967, USA

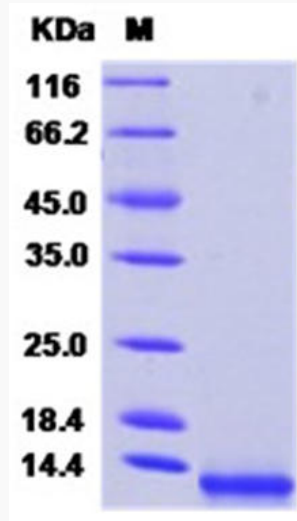
<b>Unit ID</b>	P80075
<b>Unit ID-Weblink</b>	<a href="http://www.uniprot.org/uniprot/P80075">http://www.uniprot.org/uniprot/P80075</a>
<b>GENE INFORMATION</b>	
<b>Gene Name</b>	CCL8 chemokine (C-C motif) ligand 8 [ Homo sapiens ]
<b>Official Symbol</b>	CCL8
<b>Synonyms</b>	CCL8; chemokine (C-C motif) ligand 8; SCYA8, small inducible cytokine subfamily A (Cys Cys), member 8 (monocyte chemotactic protein 2); C-C motif chemokine 8; HC14; MCP 2; small-inducible cytokine A8; monocyte chemotactic protein 2; monocyte chemoattractant protein 2; small inducible cytokine subfamily A (Cys-Cys), member 8 (monocyte chemotactic protein 2); MCP2; MCP-2; SCYA8; SCYA10;
<b>Gene ID</b>	6355
<b>mRNA Refseq</b>	NM_005623
<b>protein Refseq</b>	NP_005614
<b>MIM</b>	602283

 Tel: 1-631-559-9269 1-516-512-3133

 Email: [info@creative-biomart.com](mailto:info@creative-biomart.com)  Fax: 1-631-938-8127

 45-1 Ramsey Road, Shirley, NY 11967, USA

SDS-PAGE



 Tel: 1-631-559-9269 1-516-512-3133

 Email: [info@creative-biomart.com](mailto:info@creative-biomart.com)  Fax: 1-631-938-8127

 45-1 Ramsey Road, Shirley, NY 11967, USA