

Recombinant Human CCL8 protein, His-tagged

Cat. No. CCL8-37H Lot. No. (See product label)

SPECIFICATION

Product Overview	Recombinant Human CCL8 protein, fused to His-tag, was expressed in E. coli.
Species	Human
Source	E.coli
Description	<p>This antimicrobial gene is one of several chemokine genes clustered on the q-arm of chromosome 17. Chemokines form a superfamily of secreted proteins involved in immunoregulatory and inflammatory processes. The superfamily is divided into four subfamilies based on the arrangement of N-terminal cysteine residues of the mature peptide. This chemokine is a member of the CC subfamily which is characterized by two adjacent cysteine residues. This cytokine displays chemotactic activity for monocytes, lymphocytes, basophils and eosinophils. By recruiting leukocytes to sites of inflammation this cytokine may contribute to tumor-associated leukocyte infiltration and to the antiviral state against HIV infection.</p>
Form	50 mM Tris, 300 mM NaCl, pH 8.0.
Molecular Mass	9.8kDa
AA Sequence	MHHHHHHQPDVSVIPITCCFNVINRKIPIQRLESYTRITNIQCPKEAVIFKTKRGKEVC ADPKERWVRDSMKHLDQIFQNLKP
Purity	90%

 Tel: 1-631-559-9269 1-516-512-3133

 Email: info@creative-biomart.com  Fax: 1-631-938-8127

 45-1 Ramsey Road, Shirley, NY 11967, USA

Storage	Short Term Storage at 4 centigrade, Long Term Storage at -20 centigrade to -80 centigrade. Avoid freeze/thaw cycles.
----------------	--

Concentration	0.2 mg/ml
----------------------	-----------

GENE INFORMATION

Gene Name	CCL8 C-C motif chemokine ligand 8 [Homo sapiens (human)]
------------------	--

Official Symbol	CCL8
------------------------	------

Synonyms	HC14; MCP2; MCP-2; SCYA8; SCYA10
-----------------	----------------------------------

Gene ID	6355
----------------	------

mRNA Refseq	NM_005623
--------------------	-----------

Protein Refseq	NP_005614
-----------------------	-----------

MIM	602283
------------	--------

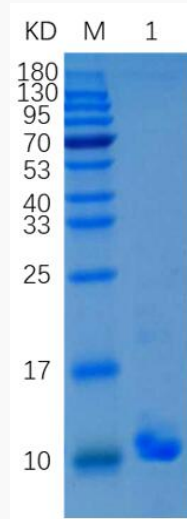
UniProt ID	P80075
-------------------	--------

 Tel: 1-631-559-9269 1-516-512-3133

 Email: info@creative-biomart.com  Fax: 1-631-938-8127

 45-1 Ramsey Road, Shirley, NY 11967, USA

SDS-PAGE



SDS-PAGE analysis of purified recombinant CCL8, His tag.

 Tel: 1-631-559-9269 1-516-512-3133

 Email: info@creative-biomart.com  Fax: 1-631-938-8127

 45-1 Ramsey Road, Shirley, NY 11967, USA