

Recombinant Human CCL8 Protein

Cat. No. CCL8-45H Lot. No. (See product label)

SPECIFICATION

Product Overview	Recombinant Human CCL8 Protein without tag was expressed in E. coli.
Species	Human
Source	E.coli
ProteinLength	76 AA
Description	Monocyte chemotactic protein 2 (MCP-2), also known as CCL8, is a cytokine that is important during allergic and inflammatory responses. MCP-2 activates mast cells, eosinophils, and basophils through the G protein-coupled chemokine receptors CCR1, CCR2B, and CCR5. MCP-2 signaling through the CCR5 receptor also functions as a natural inhibitor of the human immunodeficiency virus, type 1 (HIV-1).
Molecular Mass	Monomer, 8.9 kDa
AA Sequence	QPDSVSIPITCCFNVINRKIPIQRLESYTRITNIQCPKEAVIFKTKRGKEVCADPKERWV RDSMKHLDQIFQNLKP
Endotoxin	≤ 1 EUs/μg by Kinetic LAL
Purity	≥95%, Reducing and Non-Reducing SDS-PAGE
Stability	12 months from date of receipt when stored at -20 to -80 centigrade as supplied. 1 month when stored at 4 centigrade after reconstituting as directed.

 Tel: 1-631-559-9269 1-516-512-3133

 Email: info@creative-biomart.com  Fax: 1-631-938-8127

 45-1 Ramsey Road, Shirley, NY 11967, USA

	3 months when stored at -20 to -80 centigrade after reconstituting as directed.
Storage	At -20 centigrade.
Storage Buffer	Lyophilized from a sterile (0.2 micron) filtered aqueous solution containing 0.1% Trifluoroacetic Acid (TFA)
Reconstitution	Sterile water at 0.1 mg/mL
Handling	Centrifuge vial before opening. Suspend the product by gently pipetting the above recommended solution down the sides of the vial. DO NOT VORTEX. Allow several minutes for complete reconstitution. For prolonged storage, dilute to working aliquots in a 0.1% BSA solution, store at -80 centigrade and avoid repeat freeze thaws.
Shipping	Room temperature.

GENE INFORMATION

Gene Name	CCL8 C-C motif chemokine ligand 8 [Homo sapiens (human)]
Official Symbol	CCL8
Synonyms	CCL8; C-C motif chemokine ligand 8; HC14; MCP2; MCP-2; SCYA8; SCYA10; C-C motif chemokine 8; chemokine (C-C motif) ligand 8; monocyte chemoattractant protein 2; monocyte chemotactic protein 2; small inducible cytokine subfamily A (Cys-Cys), member 8 (monocyte chemotactic protein 2); small-inducible cytokine A8
Gene ID	6355
mRNA Refseq	NM_005623

 Tel: 1-631-559-9269 1-516-512-3133

 Email: info@creative-biomart.com  Fax: 1-631-938-8127

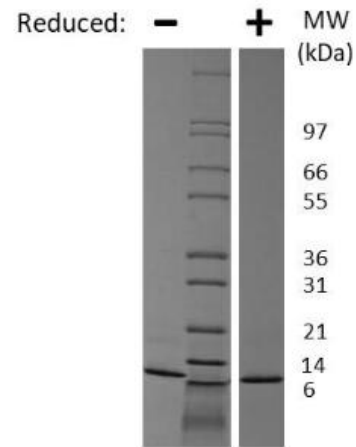
 45-1 Ramsey Road, Shirley, NY 11967, USA

Protein Refseq NP_005614

MIM 602283

UniProt ID P80075

WB



 Tel: 1-631-559-9269 1-516-512-3133

 Email: info@creative-biomart.com  Fax: 1-631-938-8127

 45-1 Ramsey Road, Shirley, NY 11967, USA