

Recombinant Cattle CCL8 protein, His & GST-tagged

Cat. No. CCL8-692C Lot. No. (See product label)

SPECIFICATION

Product Overview	Recombinant Cattle CCL8 aa. (Met1~Pro99 (Accession # Q09141)) fused with N-terminal His & GST tag was produced in E. coli cells.
Species	Cattle
Source	E.coli
ProteinLength	Met1~Pro99
Form	Freeze-dried powder
Molecular Mass	Predicted Molecular Mass: 42.9kDa
Endotoxin	<1.0EU per 1g (determined by the LAL method)
Purity	>95%
Characteristic	The isoelectric point is 7.6.
Applications	SDS-PAGE; WB; ELISA; IP.
Stability	The thermal stability is described by the loss rate. The loss rate was determined by accelerated thermal degradation test, that is, incubate the protein at 37°C for 48h, and no obvious degradation and precipitation were observed. The loss rate is less than 5% within the expiration date under appropriate storage condition.

 Tel: 1-631-559-9269 1-516-512-3133

 Email: info@creative-biomart.com  Fax: 1-631-938-8127

 45-1 Ramsey Road, Shirley, NY 11967, USA

Storage	Avoid repeated freeze/thaw cycles. Store at 2-8°C for one month. Aliquot and store at -80°C for 12 months.
Storage buffer	Supplied as lyophilized form in PBS, pH 7.4, containing 5% sucrose, 0.01% sarcosyl.
Reconstitution	Reconstitute in sterile PBS, pH7.2-pH7.4.

GENE INFORMATION

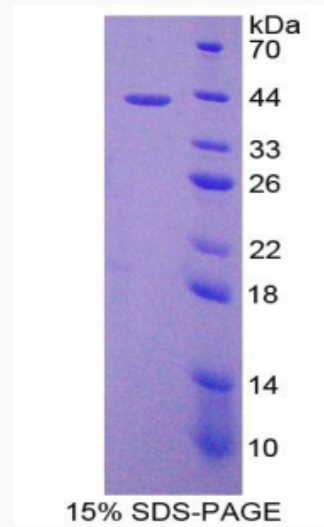
Gene Name	CCL8 chemokine (C-C motif) ligand 8 [<i>Bos taurus</i> (cattle)]
Official Symbol	CCL8
Synonyms	SCYA8; C-C motif chemokine 8-like; MCP-2; monocyte chemoattractant protein 2; monocyte chemotactic protein 2; small inducible cytokine subfamily A (Cys-Cys), member 8 (monocyte chemotactic protein 2); small-inducible cytokine A8
Gene ID	281044
mRNA Refseq	NM_174007.1
Protein Refseq	NP_776432.1
UniProt ID	Q09141

 Tel: 1-631-559-9269 1-516-512-3133

 Email: info@creative-biomart.com  Fax: 1-631-938-8127

 45-1 Ramsey Road, Shirley, NY 11967, USA

SDS-PAGE



 Tel: 1-631-559-9269 1-516-512-3133

 Email: info@creative-biomart.com  Fax: 1-631-938-8127

 45-1 Ramsey Road, Shirley, NY 11967, USA