

Recombinant Human CCL8 protein, His & T7-tagged

Cat. No. CCL8-693H Lot. No. (See product label)

SPECIFICATION

Product Overview	Recombinant Human CCL8 aa. (Met1~Pro99 (Accession # P80075)) fused with N-terminal His & T7 tag was produced in E. coli cells.
Species	Human
Source	E.coli
ProteinLength	Met1~Pro99
Form	Freeze-dried powder
Molecular Mass	Predicted Molecular Mass: 15.1kDa
Endotoxin	<1.0EU per 1g (determined by the LAL method)
Purity	>95%
Characteristic	The isoelectric point is 9.6.
Applications	SDS-PAGE; WB; ELISA; IP.
Stability	The thermal stability is described by the loss rate. The loss rate was determined by accelerated thermal degradation test, that is, incubate the protein at 37°C for 48h, and no obvious degradation and precipitation were observed. The loss rate is less than 5% within the expiration date under appropriate storage condition.

 Tel: 1-631-559-9269 1-516-512-3133

 Email: info@creative-biomart.com  Fax: 1-631-938-8127

 45-1 Ramsey Road, Shirley, NY 11967, USA

Storage	Avoid repeated freeze/thaw cycles. Store at 2-8°C for one month. Aliquot and store at -80°C for 12 months.
Storage buffer	Supplied as lyophilized form in PBS, pH 7.4, containing 5% sucrose, 0.01% sarcosyl.
Reconstitution	Reconstitute in sterile PBS, pH7.2-pH7.4.

GENE INFORMATION

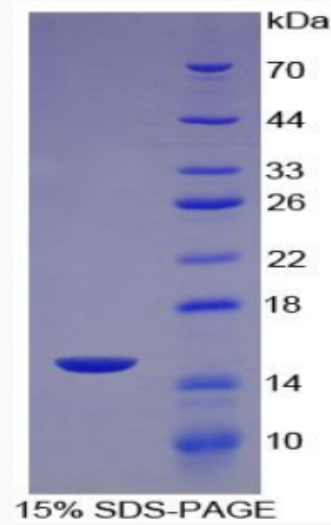
Gene Name	CCL8 C-C motif chemokine ligand 8 [Homo sapiens (human)]
Official Symbol	CCL8
Synonyms	HC14; MCP2; MCP-2; SCYA8; SCYA10; chemokine (C-C motif) ligand 8; monocyte chemoattractant protein 2; monocyte chemotactic protein 2; small inducible cytokine subfamily A (Cys-Cys), member 8 (monocyte chemotactic protein 2); small-inducible cytokine A8
Gene ID	6355
mRNA Refseq	NM_005623.2
Protein Refseq	NP_005614.2
UniProt ID	P80075

 Tel: 1-631-559-9269 1-516-512-3133

 Email: info@creative-biomart.com  Fax: 1-631-938-8127

 45-1 Ramsey Road, Shirley, NY 11967, USA

SDS-PAGE



 Tel: 1-631-559-9269 1-516-512-3133

 Email: info@creative-biomart.com  Fax: 1-631-938-8127

 45-1 Ramsey Road, Shirley, NY 11967, USA