

Active Recombinant Human CCNA1 protein, His-tagged

Cat. No. CCNA1-3335H Lot. No. (See product label)

SPECIFICATION

Product Overview	Active Recombinant Human CCNA1 protein(NP_003905.1) (Met 1-Gln 465) was expressed in Insect Cells, with a polyhistidine tag at the N-terminus.
Species	Human
Source	Insect Cells
ProteinLength	1-465 aa
Form	Lyophilized from sterile 20mM Tris, 500mM NaCl, pH 7.4.
Bio-activity	1. Measured by its binding ability in a functional ELISA. Immobilized human His-CCNA1 at 10 µg/ml (100 µl/well) can bind biotinylated human CDK1. The EC50 of biotinylated human CDK1 is 0.02-0.04 µg/ml. 2. Measured by its binding ability in a functional ELISA. Immobilized human His-CCNA1 at 10 µg/ml (100 µl/well) can bind biotinylated human CDK2-His. The EC50 of biotinylated human CDK2-His is 0.07-0.15 µg/ml.
Molecular Mass	The recombinant human CCNA1 consists of 483 amino acids and predicts a molecular mass of 54.6 kDa. It migrates as an approximately 50 kDa band in SDS-PAGE under reducing conditions.
Endotoxin	< 1.0 EU per µg of the protein as determined by the LAL method.
Purity	> 96 % as determined by SDS-PAGE

 Tel: 1-631-559-9269 1-516-512-3133

 Email: info@creative-biomart.com  Fax: 1-631-938-8127

 45-1 Ramsey Road, Shirley, NY 11967, USA

Storage	Store it under sterile conditions at -20°C to -80°C upon receiving. Recommend to aliquot the protein into smaller quantities for optimal storage. Avoid repeated freeze-thaw cycles.
Reconstitution	It is recommended that sterile water be added to the vial to prepare a stock solution of 0.2 ug/ul. Centrifuge the vial at 4°C before opening to recover the entire contents.
protein Refseq-Weblink	http://www.ncbi.nlm.nih.gov/protein/NP_001104515.1
Unit ID	P78396
Unit ID-Weblink	http://www.uniprot.org/uniprot/P78396

GENE INFORMATION

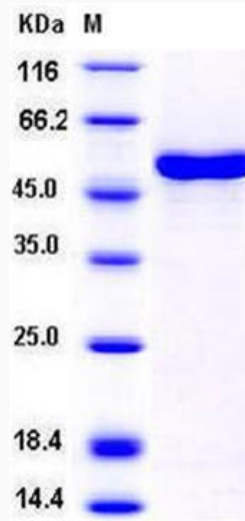
Gene Name	CCNA1 cyclin A1 [Homo sapiens]
Official Symbol	CCNA1
Synonyms	CCNA1; cyclin A1; cyclin-A1;
Gene ID	8900
mRNA Refseq	NM_001111045
protein Refseq	NP_001104515
MIM	604036

 Tel: 1-631-559-9269 1-516-512-3133

 Email: info@creative-biomart.com  Fax: 1-631-938-8127

 45-1 Ramsey Road, Shirley, NY 11967, USA

SDS-PAGE



 Tel: 1-631-559-9269 1-516-512-3133

 Email: info@creative-biomart.com  Fax: 1-631-938-8127

 45-1 Ramsey Road, Shirley, NY 11967, USA