

## Recombinant Human CCNA2 Protein, GST-Tagged

**Cat. No.** CCNA2-0648H    **Lot. No.** (See product label)

### SPECIFICATION

<b>Product Overview</b>	Human CCNA2 full-length ORF (NP_001228.1, 1 a.a. - 432 a.a.) recombinant protein with GST-tag at N-terminal.
<b>Species</b>	Human
<b>Source</b>	Wheat Germ
<b>Description</b>	The protein encoded by this gene belongs to the highly conserved cyclin family, whose members function as regulators of the cell cycle. This protein binds and activates cyclin-dependent kinase 2 and thus promotes transition through G1/S and G2/M. [provided by RefSeq, Aug 2016]
<b>Molecular Mass</b>	74.9 kDa
<b>AA Sequence</b>	MLGNSAPGPATREAGSALLALQQTALQEDQENINPEKAAPVQQPRTRAALAVLKSG NPRGLAQQRPKTRRVAPLKDLPVNDEHVTVPPWKANSKQPAFTIHVDEAEKEAQK KPAESQKIEREDALAFNSAISLPGPRKPLVPLDYPMDGSFESPHTMDMSIVLEDEKP VSVNEVPDYHEDIHTYLREMEVKCKPKVGYMKKQPDITNSMRAILVDWLVEVGEEY KLQNETLHLAVNYIDRFLSSMSVLRGKLQLVGTAAMLLASKFEEIYPPEVAEFVYITD DTYTKKQVLRMEHLVLKVLTFDLAAPT VNQFLTQYFLHQQPANCKVESLAMFLGELS LIDADPYLKYLPSVIAGAAFHLALYVTGQSWPESLIRKTYTLES LKPC LMDLHQTYL KAPQHAQQSIREKYKNSKYHGVSLNPPETLNL
<b>Applications</b>	Enzyme-linked Immunoabsorbent Assay Western Blot (Recombinant protein)

 Tel: 1-631-559-9269    1-516-512-3133

 Email: [info@creative-biomart.com](mailto:info@creative-biomart.com)     Fax: 1-631-938-8127

 45-1 Ramsey Road, Shirley, NY 11967, USA

Antibody Production  
Protein Array

**Storage** Store at -80 centigrade. Aliquot to avoid repeated freezing and thawing.

**Storage Buffer** 50 mM Tris-HCl, 10 mM reduced Glutathione, pH=8.0 in the elution buffer.

## GENE INFORMATION

**Gene Name** [CCNA2 cyclin A2 \[ Homo sapiens \]](#)

**Official Symbol** [CCNA2](#)

**Synonyms** CCNA2; cyclin A2; CCN1, CCNA; cyclin-A2; cyclin-A; CCN1; CCNA;

**Gene ID** [890](#)

**mRNA Refseq** [NM\\_001237](#)

**Protein Refseq** [NP\\_001228](#)

**MIM** [123835](#)

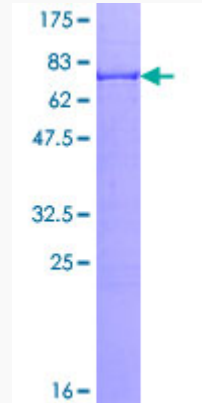
**UniProt ID** [P20248](#)

 Tel: 1-631-559-9269 1-516-512-3133

 Email: [info@creative-biomart.com](mailto:info@creative-biomart.com)  Fax: 1-631-938-8127

 45-1 Ramsey Road, Shirley, NY 11967, USA

**Quality Control  
Testing**



12.5% SDS-PAGE Stained with Coomassie Blue.

 Tel: 1-631-559-9269 1-516-512-3133

 Email: [info@creative-biomart.com](mailto:info@creative-biomart.com)  Fax: 1-631-938-8127

 45-1 Ramsey Road, Shirley, NY 11967, USA