

# Recombinant Full Length Human CCNA2 Protein, C-Flag-tagged

**Cat. No.** CCNA2-362HFL    **Lot. No.** (See product label)

## SPECIFICATION

<b>Product Overview</b>	Recombinant Full Length Human CCNA2 Protein, fused to Flag-tag at C-terminus, was expressed in Mammalian cells.
<b>Species</b>	Human
<b>Source</b>	Mammalian Cells
<b>Description</b>	The protein encoded by this gene belongs to the highly conserved cyclin family, whose members function as regulators of the cell cycle. This protein binds and activates cyclin-dependent kinase 2 and thus promotes transition through G1/S and G2/M.
<b>Form</b>	25 mM Tris HCl, pH 7.3, 100 mM glycine, 10% glycerol.
<b>Molecular Mass</b>	48.4 kDa
<b>AA Sequence</b>	MLGNSAPGPATREAGSALLALQQTALQEDQENINPEKAAPVQQPRTRAALAVLKSG NPRGLAQQQRPKTR RVAPLKDLPVNDEHVTVPPWKANSKQPAFTIHVDEAEKEAQ KKPAESQKIEREDALAFNSAISLPGPRKP LVPLDYPMDGSFESPHTMDMSIVLEDEK PVSVNEVPDYHEDIHTYLREMEVKCKPKVGYMKKQPDITNSM RAILVDWLVEVGEE YKLQNETLHLAVNYIDRFLSSMSVLRGKLQLVGTAAMLLASKFEEIYPPEVAEFVY IT DDTYTKKQVLRMEHLVVKVLTFDLAAPTQVNFQFLTQYFLHQQPANCKVESLAMFLGEL SLIDADPYLKY LPSVIAGAAFHLALYVTGQSWPESLIRKTYTLESKPCMLMDLHQT YLKAPQHAQQSIREKYKNSKYHG

 Tel: 1-631-559-9269    1-516-512-3133

 Email: [info@creative-biomart.com](mailto:info@creative-biomart.com)     Fax: 1-631-938-8127

 45-1 Ramsey Road, Shirley, NY 11967, USA

VSLLNPPETLNLTRTRPLEQKLISEEDLAANDILDYKDDDDKV

**Purity** > 80% as determined by SDS-PAGE and Coomassie blue staining.

**Stability** Stable for 12 months from the date of receipt of the product under proper storage and handling conditions. Avoid repeated freeze-thaw cycles.

**Storage** Store at -80 centigrade.

**Concentration** >50 ug/mL as determined by microplate BCA method.

**Preparation** Recombinant protein was captured through anti-DDK affinity column followed by conventional chromatography steps.

**Protein Families** Druggable Genome, Stem cell - Pluripotency

**Protein Pathways** Cell cycle, Progesterone-mediated oocyte maturation

**Full Length** Full L.

## GENE INFORMATION

**Gene Name** [CCNA2 cyclin A2 \[ Homo sapiens \(human\) \]](#)

**Official Symbol** [CCNA2](#)

**Synonyms** CCN1; CCNA

**Gene ID** [890](#)

**mRNA Refseq** [NM\\_001237.5](#)

 Tel: 1-631-559-9269 1-516-512-3133

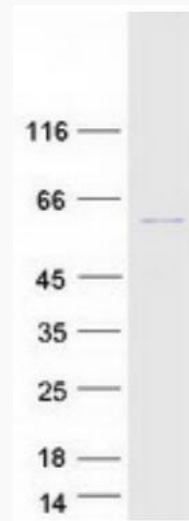
 Email: [info@creative-biomart.com](mailto:info@creative-biomart.com)  Fax: 1-631-938-8127

 45-1 Ramsey Road, Shirley, NY 11967, USA

**Protein Refseq** NP\_001228.2

**MIM** 123835

**UniProt ID** P20248



Coomassie blue staining of purified CCNA2 protein.

 Tel: 1-631-559-9269 1-516-512-3133

 Email: [info@creative-biomart.com](mailto:info@creative-biomart.com)  Fax: 1-631-938-8127

 45-1 Ramsey Road, Shirley, NY 11967, USA