

Recombinant Human CCNA2 Protein, Myc/DDK-tagged, C13 and N15-labeled

Cat. No. CCNA2-4115H Lot. No. (See product label)

SPECIFICATION

Product Overview

CCNA2 MS Standard C13 and N15-labeled recombinant protein (NP_001228) with a C-terminal MYC/DDK tag, was expressed in HEK293 cells.

Species

Human

Source

HEK293

Description

The protein encoded by this gene belongs to the highly conserved cyclin family, whose members function as regulators of the cell cycle. This protein binds and activates cyclin-dependent kinase 2 and thus promotes transition through G1/S and G2/M.

Molecular Mass

48.4 kDa

AA Sequence

MLGNSAPGPATREAGSALLALQQTALQEDQENINPEKAAPVQQPRTRAALAVLKSG
 NPRGLAQQQRPKTRRVAPLKDLPVNDEHVTVPWKANSKQPAFTIHVDEAEKEAQK
 KPAESQKIEREDALAFNSAISLPGPRKPLVPLDYPMDGSFESPHTMDMSIVLEDEKP
 VSVNEVPDYHEDIHTYLREMEVKCKPKVGYMKKQPDITNSMRAILVDWLVEVGEEY
 KLQNETLHLAVNYIDRFLSSMSVLRGKLQLVGTAAMLLASKFEEIYPPEVAEFVYITD
 DTYTKKQVLRMEHLVLKVLTFDLAAPTQVNFQFLTQYFLHQQPANCKVESLAMFLGELS
 LIDADPYLKYLPSVIAGAAFHLALYVTGQSWPESLIRKTGYTLESCLKPCLMDLHQTYL
 KAPQHAQQSIREKYKNSKYHGVSLNPPETLNLTRTRPLEQKLISEEDLAANDILDYK
 DDDDKV

Tel: 1-631-559-9269 1-516-512-3133

Email: info@creative-biomart.com Fax: 1-631-938-8127

45-1 Ramsey Road, Shirley, NY 11967, USA

Purity	> 80% as determined by SDS-PAGE and Coomassie blue staining
Stability	Stable for 3 months from receipt of products under proper storage and handling conditions.
Storage	Store at -80 centigrade. Avoid repeated freeze-thaw cycles.
Concentration	50 µg/mL as determined by BCA
Storage Buffer	100 mM glycine, 25 mM Tris-HCl, pH 7.3.

GENE INFORMATION

Gene Name	CCNA2 cyclin A2 [Homo sapiens (human)]
Official Symbol	CCNA2
Synonyms	CCNA2; cyclin A2; CCN1, CCNA; cyclin-A2; cyclin-A; CCN1; CCNA;
Gene ID	890
mRNA Refseq	NM_001237
Protein Refseq	NP_001228
MIM	123835
UniProt ID	P20248

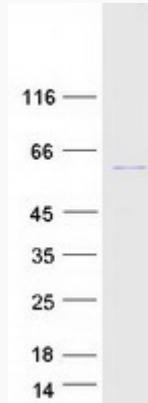
 Tel: 1-631-559-9269 1-516-512-3133

 Email: info@creative-biomart.com  Fax: 1-631-938-8127

 45-1 Ramsey Road, Shirley, NY 11967, USA



SDS-PAGE



Tel: 1-631-559-9269 1-516-512-3133

Email: info@creative-biomart.com Fax: 1-631-938-8127

45-1 Ramsey Road, Shirley, NY 11967, USA