

Recombinant Human CCNA2 protein, His-tagged

Cat. No. CCNA2-4242H Lot. No. (See product label)

SPECIFICATION

Product Overview	Recombinant Human CCNA2 protein(P20248)(1-432aa), fused with N-terminal His tag, was expressed in E.coli.
Species	Human
Source	E.coli
ProteinLength	1-432aa
Form	If the delivery form is liquid, the default storage buffer is Tris/PBS-based buffer, 5%-50% glycerol. If the delivery form is lyophilized powder, the buffer before lyophilization is Tris/PBS-based buffer, 6% Trehalose, pH 8.0.
Molecular Mass	54.6 kDa
Purity	Greater than 85% as determined by SDS-PAGE.
Storage	Store at -20°C/-80°C upon receipt, aliquoting is necessary for mutiple use. Avoid repeated freeze-thaw cycles.
Reconstitution	We recommend that this vial be briefly centrifuged prior to opening to bring the contents to the bottom. Please reconstitute protein in deionized sterile water to a concentration of 0.1-1.0 mg/mL. We recommend to add 5-50% of glycerol (final concentration) and aliquot for long-term storage at -20°C/-80°C.

 Tel: 1-631-559-9269 1-516-512-3133

 Email: info@creative-biomart.com  Fax: 1-631-938-8127

 45-1 Ramsey Road, Shirley, NY 11967, USA

AA Sequence

MLGNSAPGPATREAGSALLALQQTALQEDQENINPEKAAPVQQPRTRAALAVLKSG
 NPRGLAQQQRPKTRRVAPLKDLPVNDEHVTVPWKANSKQPAFTIHVDEAEKEAQK
 KPAESQKIEREDALAFNSAISLPGPRKPLVPLDYPMDGSFESPHTMDMSIILEDEKPV
 SVNEVPDYHEDIHTYLREMEVKCKPKVGYMKKQPDITNSMRAILVDWLVEVGEEYKL
 QNETLHLAVNYIDRFLSSMSVLRGKLQLVGTAAMLLASKFEEIYPPEVAEFVYITDDT
 YTKKQVLRMEHLVVKVLTFDLAAPTVMNQFLTQYFLHQQPANCKVESLAMFLGELSLI
 DADPYLKYLPSVIAGAAFHLALYTVTGGQSWPESLIRKTGYTLESCLKPCLMDLHQTYLK
 APQHAQQSIREKYKNSKYHGVSLLNPPETLNL

GENE INFORMATION

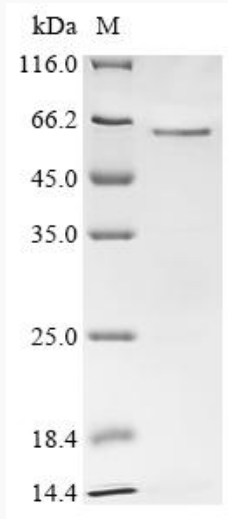
Gene Name	CCNA2 cyclin A2 [Homo sapiens]
Official Symbol	CCNA2
Synonyms	CCNA2; cyclin A2; CCN1, CCNA; cyclin-A2; cyclin-A; CCN1; CCNA;
Gene ID	890
mRNA Refseq	NM_001237
Protein Refseq	NP_001228
MIM	123835
UniProt ID	P20248

 Tel: 1-631-559-9269 1-516-512-3133

 Email: info@creative-biomart.com  Fax: 1-631-938-8127

 45-1 Ramsey Road, Shirley, NY 11967, USA

SDS-PAGE



 Tel: 1-631-559-9269 1-516-512-3133

 Email: info@creative-biomart.com  Fax: 1-631-938-8127

 45-1 Ramsey Road, Shirley, NY 11967, USA