

Recombinant Human CCND1 Protein, GST-Tagged

Cat. No. CCND1-0658H Lot. No. (See product label)

SPECIFICATION

Product Overview	Human CCND1 full-length ORF (AAH01501, 1 a.a. - 295 a.a.) recombinant protein with GST-tag at N-terminal.
Species	Human
Source	Wheat Germ
Description	<p>The protein encoded by this gene belongs to the highly conserved cyclin family, whose members are characterized by a dramatic periodicity in protein abundance throughout the cell cycle. Cyclins function as regulators of CDK kinases. Different cyclins exhibit distinct expression and degradation patterns which contribute to the temporal coordination of each mitotic event. This cyclin forms a complex with and functions as a regulatory subunit of CDK4 or CDK6, whose activity is required for cell cycle G1/S transition. This protein has been shown to interact with tumor suppressor protein Rb and the expression of this gene is regulated positively by Rb. Mutations, amplification and overexpression of this gene, which alters cell cycle progression, are observed frequently in a variety of tumors and may contribute to tumorigenesis. [provided by RefSeq, Jul 2008]</p>
Molecular Mass	58.19 kDa
AA Sequence	MEHQLLCCEVETIRRAYPDANLLNDRVLRAMLKAEETCAPSVSYFKCVQKEVLPSM RKIVATWMLLEVCEEQKCEEEVFPLAMNYLDRFLSLEPVKKSRLQLLGATCMFVASK MKETIPLTAGKLCIYTDNSIRPEELLQMELLLVNKLKWNLAAMTPHDFIEHFLSKMPEA

 Tel: 1-631-559-9269 1-516-512-3133

 Email: info@creative-biomart.com  Fax: 1-631-938-8127

 45-1 Ramsey Road, Shirley, NY 11967, USA

EENKQIIRKHAQTFVALCATDVKFISNPPSMVAAGSVVAAVQGLNLRSPNNFLSYRRL
 TRFLSRVIKCDPDCLRACQEIEALLESLRQAQQNMDPKAAEEEEEEEEEEVDLACT
 PTDVRDVDI

Applications
 Enzyme-linked Immunoabsorbent Assay
 Western Blot (Recombinant protein)
 Antibody Production
 Protein Array

Storage Store at -80 centigrade. Aliquot to avoid repeated freezing and thawing.

Storage Buffer 50 mM Tris-HCl, 10 mM reduced Glutathione, pH=8.0 in the elution buffer.

GENE INFORMATION

Gene Name [CCND1 cyclin D1 \(PRAD1: parathyroid adenomatosis 1\) \[Homo sapiens \]](#)

Official Symbol [CCND1](#)

Synonyms CCND1; cyclin D1 (PRAD1: parathyroid adenomatosis 1); BCL1, cyclin D1 (PRAD1: parathyroid adenomatosis 1), D11S287E, PRAD1; B cell CLL/lymphoma 1; G1/S specific cyclin D1; parathyroid adenomatosis 1; U21B31; BCL-1; PRAD1; D11S287E;

Gene ID [595](#)

mRNA Refseq [NM_053056](#)

Protein Refseq [NP_444284](#)

MIM [168461](#)

 Tel: 1-631-559-9269 1-516-512-3133

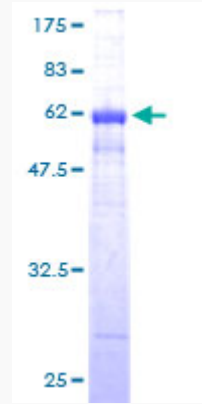
 Email: info@creative-biomart.com  Fax: 1-631-938-8127

 45-1 Ramsey Road, Shirley, NY 11967, USA

UniProt ID

P24385

Quality Control
Testing



12.5% SDS-PAGE Stained with Coomassie Blue.

 Tel: 1-631-559-9269 1-516-512-3133

 Email: info@creative-biomart.com  Fax: 1-631-938-8127

 45-1 Ramsey Road, Shirley, NY 11967, USA