

Recombinant Human CCND1 protein, His-tagged

Cat. No. CCND1-21H Lot. No. (See product label)

SPECIFICATION

Product Overview	Recombinant Human CCND1 protein(NP_444284.1)(1-295aa), fused to N-terminal His-tagged, was expressed in E. coli.
Species	Human
Source	E.coli
ProteinLength	1-295aa
Form	If the delivery form is liquid, the default storage buffer is Tris/PBS-based buffer, 5%-50% glycerol. If the delivery form is lyophilized powder, the buffer before lyophilization is Tris/PBS-based buffer, 6% Trehalose, pH 8.0.
Molecular Mass	37.7kDa
AA Sequence	MEHQLLCCEVETIRRAYPDANLLNDRVLRAMLKAEETCAPSVSYFKCVQKEVLPSM RKIVATWMLEVCEEQKCEEEVFPLAMNYLDRFLSLEPVKKSRLQLLGATCMFVASK MKETIPLTAEKLCIYTDNSIRPEELLQMELLL VNKLKWNLAAAMTPHDFIEHFLSKMPEA EENKQIIRKHAQTFVALCATDVKFISNPPSMVAAGSVVAAVQGLNLRSPNNFLSYRRL TRFLSRVIKCDPDCLRACQEIQIEALLESLRQAQQNMDPKAAEEEEEEEEEEVDLACT PTDVRDVDI
Purity	Greater than 90% as determined by SDS-PAGE.

 Tel: 1-631-559-9269 1-516-512-3133

 Email: info@creative-biomart.com  Fax: 1-631-938-8127

 45-1 Ramsey Road, Shirley, NY 11967, USA

Notes	Repeated freezing and thawing is not recommended. Store working aliquots at 4°C for up to one week.
Storage	Store at -20°C upon receipt, aliquoting is necessary for multiple use. Avoid repeated freeze-thaw cycles.
Reconstitution	We recommend that this vial be briefly centrifuged prior to opening to bring the contents to the bottom. Please reconstitute protein in deionized sterile water to a concentration of 0.1-1.0 mg/mL. We recommend to add 5-50% of glycerol (final concentration) and aliquot for long-term storage at -20°C/-80°C. Our default final concentration of glycerol is 50%. Customers could use it as reference.

GENE INFORMATION

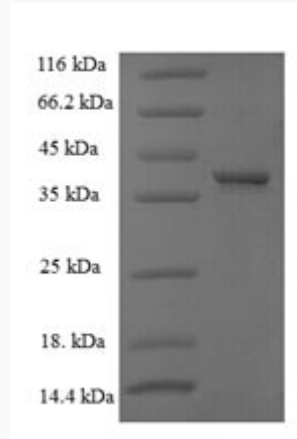
Gene Name	CCND1 cyclin D1 [Homo sapiens (human)]
Official Symbol	CCND1
Synonyms	BCL1; PRAD1; U21B31; D11S287E
Gene ID	595
mRNA Refseq	NM_053056.3
Protein Refseq	NP_444284.1
MIM	168461
UniProt ID	P24385

 Tel: 1-631-559-9269 1-516-512-3133

 Email: info@creative-biomart.com  Fax: 1-631-938-8127

 45-1 Ramsey Road, Shirley, NY 11967, USA

SDS-PAGE



 Tel: 1-631-559-9269 1-516-512-3133

 Email: info@creative-biomart.com  Fax: 1-631-938-8127

 45-1 Ramsey Road, Shirley, NY 11967, USA