

Recombinant Human CCND1 protein, His-tagged

Cat. No. CCND1-3659H Lot. No. (See product label)

SPECIFICATION

Product Overview	Recombinant Human CCND1 protein(P24385)(310aa), fused with N-terminal His tag, was expressed in E. coli.
Species	Human
Source	E.coli
Protein Length	310aa(including fusion tag)
Tag	N-His
Form	20mM Tris.Cl, 300mM NaCl, 0.4M Urea, 50% Glycerol, pH8.0.
Molecular Mass	35.6kDa(including fusion tag)
Storage	Store at -80°C and avoid repeated freeze-thaw cycles.
Reconstitution	It is recommended that sterile water be added to the vial to prepare a stock solution of 0.2 ug/ul. Centrifuge the vial at 4°C before opening to recover the entire contents.

GENE INFORMATION

Gene Name	CCND1 cyclin D1 (PRAD1: parathyroid adenomatosis 1) [Homo sapiens]
Official Symbol	CCND1

 Tel: 1-631-559-9269 1-516-512-3133

 Email: info@creative-biomart.com  Fax: 1-631-938-8127

 45-1 Ramsey Road, Shirley, NY 11967, USA

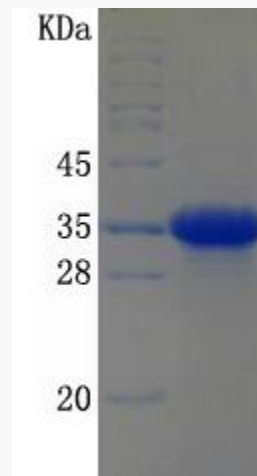
Synonyms CCND1; cyclin D1 (PRAD1: parathyroid adenomatosis 1); BCL1, cyclin D1 (PRAD1: parathyroid adenomatosis 1) , D11S287E, PRAD1; B cell CLL/lymphoma 1; G1/S specific cyclin D1; parathyroid adenomatosis 1; U21B31; BCL-1; PRAD1; D11S287E;

Gene ID 893

MIM 168461

UniProt ID P24385

SDS-PAGE



 Tel: 1-631-559-9269 1-516-512-3133

 Email: info@creative-biomart.com  Fax: 1-631-938-8127

 45-1 Ramsey Road, Shirley, NY 11967, USA