

Recombinant Human CCND1 Protein, His-GST-tagged

Cat. No. CCND1-483H Lot. No. (See product label)

SPECIFICATION

Product Overview	Recombinant Human CCND1 Protein (Met1~Ile295) is produced by E. coli expression system. This protein is fused with a His-GST tag at the N-terminal.
Species	Human
Source	E.coli
ProteinLength	Met1~Ile295
Form	20mM Tris, 150mM NaCl, pH8.0, containing 1mM EDTA, 1mM DTT, 0.01% SKL, 5% Trehalose and Proclin300.
Molecular Mass	Predicted Molecular Mass: 63.7 kDa; Accurate Molecular Mass: 63 kDa(Analysis of differences refer to the manual).
AA Sequence	MEHQLLCCEVETIRRAYPDANLLNDRVLRAMLKAEETCAPSVSYFKCVQKEVLPSM RKIVATWMLLEVCEEQKCEEEVFPLAMNYLDRFLSLEPVKKSRLQLLGATCMFVASK MKETIPLTAEKLCIYTDNSIRPEELLQMELLLVNKLKWNLAAMTPHDFIEHFLSKMPEA EENKQIIRKHAQTFVALCATDVVKFISNPPSMVAAGSVVAAVQGLNLRSPNNFLSYRRL TRFLSRVIKCDPDCLRACQEQIEALLESSLRQAQQNMDPKAAEEEEEEEEEEVDLACT PTDVRDVDI
Endotoxin	<1.0EU per 1g (determined by the LAL method)
Purity	> 90%

 Tel: 1-631-559-9269 1-516-512-3133

 Email: info@creative-biomart.com  Fax: 1-631-938-8127

 45-1 Ramsey Road, Shirley, NY 11967, USA

Applications	Positive Control; Immunogen; SDS-PAGE; WB
Notes	The kit is designed for in vitro and research use only, we will not be responsible for any issue if the kit was used in clinical diagnostic or any other procedures.
Stability	The thermal stability is described by the loss rate. The loss rate was determined by accelerated thermal degradation test, that is, incubate the protein at 37 centigrade for 48h, and no obvious degradation and precipitation were observed. The loss rate is less than 5% within the expiration date under appropriate storage condition.
Storage	Store at 2-8 centigrade for one month. Aliquot and store at -80 centigrade for 12 months. Avoid repeated freeze/thaw cycles.
Concentration	200 µg/mL
Reconstitution	Reconstitute in 20mM Tris, 150mM NaCl (pH8.0) to a concentration of 0.1-1.0 mg/mL. Do not vortex.

GENE INFORMATION

Gene Name	CCND1 cyclin D1 (PRAD1: parathyroid adenomatosis 1) [Homo sapiens]
Official Symbol	CCND1
Synonyms	CCND1; U21B31; BCL-1; PRAD1; D11S287E;
Gene ID	893
MIM	168461

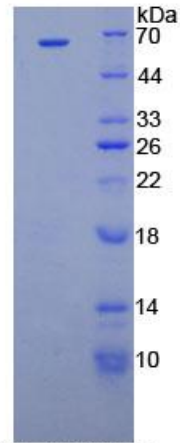
 Tel: 1-631-559-9269 1-516-512-3133

 Email: info@creative-biomart.com  Fax: 1-631-938-8127

 45-1 Ramsey Road, Shirley, NY 11967, USA

UniProt ID

P24385



15% SDS-PAGE

SDS-PAGE

 Tel: 1-631-559-9269 1-516-512-3133

 Email: info@creative-biomart.com  Fax: 1-631-938-8127

 45-1 Ramsey Road, Shirley, NY 11967, USA