

# Recombinant Human CCND1 Protein, Myc/DDK-tagged, C13 and N15-labeled

**Cat. No.** CCND1-834H    **Lot. No.** (See product label)

## SPECIFICATION

<b>Product Overview</b>	CCND1 MS Standard C13 and N15-labeled recombinant protein (NP_444284) with a C-terminal MYC/DDK tag, was expressed in HEK293 cells.
<b>Species</b>	Human
<b>Source</b>	HEK293
<b>Description</b>	The protein encoded by this gene belongs to the highly conserved cyclin family, whose members are characterized by a dramatic periodicity in protein abundance throughout the cell cycle. Cyclins function as regulators of CDK kinases. Different cyclins exhibit distinct expression and degradation patterns which contribute to the temporal coordination of each mitotic event. This cyclin forms a complex with and functions as a regulatory subunit of CDK4 or CDK6, whose activity is required for cell cycle G1/S transition. This protein has been shown to interact with tumor suppressor protein Rb and the expression of this gene is regulated positively by Rb. Mutations, amplification and overexpression of this gene, which alters cell cycle progression, are observed frequently in a variety of human cancers.
<b>Molecular Mass</b>	33.7 kDa
<b>AA Sequence</b>	MEHQLLCCEVETIRRAYPDANLLNDRVLRAMLKAEETCAPSVSYFKCVQKEVLP SMRKIVATWMLLEVCEEQKCEEEVFPLAMNYLDRFLSLEPVKKSRLQLLGATCMFVASK MKETIPLTAEKLCIYTDNSIRPEELLQMELLLVNKLKWNLAAMTPHDFIEHFLSKMPEA

 Tel: 1-631-559-9269    1-516-512-3133

 Email: [info@creative-biomart.com](mailto:info@creative-biomart.com)     Fax: 1-631-938-8127

 45-1 Ramsey Road, Shirley, NY 11967, USA

EENKQIIRKHAQTFVALCATDVKFISNPPSMVAAGSVVAAVQGLNLRSPNNFLSYRRL  
 TRFLSRVIKCDPDCLRACQEIEALLESSLRQAQQNMDPKAAEEEEEEEEEEVDLACT  
 PTDVRDVDITRTRPLEQKLISEEDLAANDILDYKDDDDKV

**Purity** > 80% as determined by SDS-PAGE and Coomassie blue staining

**Stability** Stable for 3 months from receipt of products under proper storage and handling conditions.

**Storage** Store at -80 centigrade. Avoid repeated freeze-thaw cycles.

**Concentration** 50 µg/mL as determined by BCA

**Storage Buffer** 100 mM glycine, 25 mM Tris-HCl, pH 7.3.

## GENE INFORMATION

**Gene Name** [CCND1 cyclin D1 \[ Homo sapiens \(human\) \]](#)

**Official Symbol** [CCND1](#)

**Synonyms** CCND1; cyclin D1 (PRAD1: parathyroid adenomatosis 1); BCL1, cyclin D1 (PRAD1: parathyroid adenomatosis 1), D11S287E, PRAD1; B cell CLL/lymphoma 1; G1/S specific cyclin D1; parathyroid adenomatosis 1; U21B31; BCL-1; PRAD1; D11S287E;

**Gene ID** [595](#)

**mRNA Refseq** [NM\\_053056](#)

**Protein Refseq** [NP\\_444284](#)

 Tel: 1-631-559-9269 1-516-512-3133

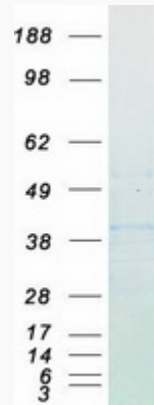
 Email: [info@creative-biomart.com](mailto:info@creative-biomart.com)  Fax: 1-631-938-8127

 45-1 Ramsey Road, Shirley, NY 11967, USA

**MIM** 168461

**UniProt ID** P24385

**SDS-PAGE**



 Tel: 1-631-559-9269 1-516-512-3133

 Email: [info@creative-biomart.com](mailto:info@creative-biomart.com)  Fax: 1-631-938-8127

 45-1 Ramsey Road, Shirley, NY 11967, USA