

Recombinant Human CCND2 Protein, GST-Tagged

Cat. No. CCND2-0659H Lot. No. (See product label)

SPECIFICATION

Product Overview	Human CCND2 full-length ORF (NP_001750.1, 1 a.a. - 289 a.a.) recombinant protein with GST-tag at N-terminal.
Species	Human
Source	Wheat Germ
Description	<p>The protein encoded by this gene belongs to the highly conserved cyclin family, whose members are characterized by a dramatic periodicity in protein abundance throughout the cell cycle. Cyclins function as regulators of CDK kinases. Different cyclins exhibit distinct expression and degradation patterns which contribute to the temporal coordination of each mitotic event. This cyclin forms a complex with CDK4 or CDK6 and functions as a regulatory subunit of the complex, whose activity is required for cell cycle G1/S transition. This protein has been shown to interact with and be involved in the phosphorylation of tumor suppressor protein Rb. Knockout studies of the homologous gene in mouse suggest the essential roles of this gene in ovarian granulosa and germ cell proliferation. High level expression of this gene was observed in ovarian and testicular tumors. Mutations in this gene are associated with megalencephaly-polymicrogyria-polydactyly-hydrocephalus syndrome 3 (MPPH3). [provided by RefSeq, Sep 2014]</p>
Molecular Mass	59.5 kDa
AA Sequence	MELLCHEVDPVRRRAVRDRNLLRDDRVLQNLLETIEERYLPQCSYFKCVQKDIQPYMR RMVATWMLLEVCEEQKCEEEVFPLAMNYLDRFLAGVPTPKSHLQLLGAVCMFLASKL

 Tel: 1-631-559-9269 1-516-512-3133

 Email: info@creative-biomart.com  Fax: 1-631-938-8127

 45-1 Ramsey Road, Shirley, NY 11967, USA

KETSPLTAEKLCIYTDNSIKPQELLEWELVVLGKWKWNLAAVTPHDFIEHILRKLPQQR
 EKLSLIRKHAQTFIALCATDFKFKFAMYPPSMIATGSVGAACGLQQDEEVSSLTCDALT
 ELLAKITNTDVDCLKACQEIEAVLLNSLQQYRQDQRDGSKSEDELQASTPTDVRD
 IDL

Applications
 Enzyme-linked Immunoabsorbent Assay
 Western Blot (Recombinant protein)
 Antibody Production
 Protein Array

Storage Store at -80 centigrade. Aliquot to avoid repeated freezing and thawing.

Storage Buffer 50 mM Tris-HCl, 10 mM reduced Glutathione, pH=8.0 in the elution buffer.

GENE INFORMATION

Gene Name [CCND2 cyclin D2 \[Homo sapiens \]](#)

Official Symbol [CCND2](#)

Synonyms CCND2; cyclin D2; G1/S-specific cyclin-D2; G1/S specific cyclin D2; G1/S-specific cyclin D2; KIAK0002; MGC102758;

Gene ID [894](#)

mRNA Refseq [NM_001759](#)

Protein Refseq [NP_001750](#)

MIM [123833](#)

 Tel: 1-631-559-9269 1-516-512-3133

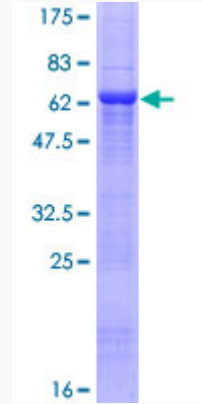
 Email: info@creative-biomart.com  Fax: 1-631-938-8127

 45-1 Ramsey Road, Shirley, NY 11967, USA


UniProt ID

P30279

Quality Control
Testing



12.5% SDS-PAGE Stained with Coomassie Blue.

 Tel: 1-631-559-9269 1-516-512-3133

 Email: info@creative-biomart.com  Fax: 1-631-938-8127

 45-1 Ramsey Road, Shirley, NY 11967, USA