

## Recombinant Human CCND2 Protein (Full length), N-GST-tagged

Cat. No. CCND2-25H Lot. No. (See product label)

### SPECIFICATION

<b>Product Overview</b>	Recombinant full-length human CyclinD2 was expressed by baculovirus in Sf9 insect cells using an N-terminal GST tag.
<b>Species</b>	Human
<b>Source</b>	Sf9 Cells
<b>ProteinLength</b>	Full length
<b>Description</b>	<p>CyclinD2 is a member of the D-type cyclins. D-type cyclins are regulators of the cell cycle and interact with several transcription factors modulating their transcriptional activations. CyclinD2 forms a complex and functions as a regulatory subunit of CDK4 or CDK6 that regulates the cell-cycle during G1/S transition. These complexes overcome the G1 growth arrest phase by phosphorylating and inactivating the retinoblastoma tumor suppressor protein. CyclinD2 is upregulated in the carcinogenesis of tumors, making it a possible therapeutic target for a variety of cancers, including colon cancer, stomach cancer, liver cancer, breast cancer, and lung cancer.</p>
<b>Molecular Mass</b>	Observed MW: ~60 kDa. Calculated MW: ~59 kDa.
<b>Purity</b>	The purity of CyclinD2 was determined to be > 85 % by densitometry.

 Tel: 1-631-559-9269 1-516-512-3133

 Email: [info@creative-biomart.com](mailto:info@creative-biomart.com)  Fax: 1-631-938-8127

 45-1 Ramsey Road, Shirley, NY 11967, USA



<b>Stability</b>	One year at -70 centigrade from date of shipment.
<b>Storage</b>	Store product at -70 centigrade. For optimal storage, aliquot target into smaller quantities after centrifugation and store at recommended temperature. For most favorable performance, avoid repeated handling and multiple freeze/thaw cycles.
<b>Concentration</b>	0.05 µg/µL
<b>Storage Buffer</b>	Recombinant protein stored in 50mM Tris-HCl, pH 7.5, 150mM NaCl, 10mM glutathione, 0.1mM EDTA, 0.25mM DTT and 25% glycerol.
<b>Shipping</b>	Dry ice

## GENE INFORMATION

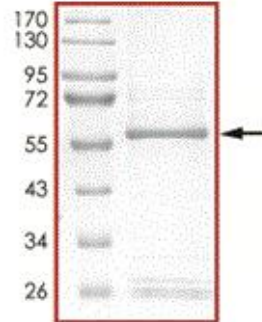
<b>Gene Name</b>	CCND2 cyclin D2 [ Homo sapiens (human) ]
<b>Official Symbol</b>	CCND2
<b>Synonyms</b>	CCND2; cyclin D2; G1/S-specific cyclin-D2; G1/S specific cyclin D2; G1/S-specific cyclin D2; KIAK0002; MGC102758;
<b>Gene ID</b>	894
<b>mRNA Refseq</b>	NM_001759
<b>Protein Refseq</b>	NP_001750
<b>MIM</b>	123833
<b>UniProt ID</b>	P30279

Tel: 1-631-559-9269 1-516-512-3133

Email: [info@creative-biomart.com](mailto:info@creative-biomart.com) Fax: 1-631-938-8127

45-1 Ramsey Road, Shirley, NY 11967, USA

Purity



 Tel: 1-631-559-9269 1-516-512-3133

 Email: [info@creative-biomart.com](mailto:info@creative-biomart.com)  Fax: 1-631-938-8127

 45-1 Ramsey Road, Shirley, NY 11967, USA