

Recombinant Human CCND2 Protein, Myc/DDK-tagged, C13 and N15-labeled

Cat. No. CCND2-6157H Lot. No. (See product label)

SPECIFICATION

Product Overview

CCND2 MS Standard C13 and N15-labeled recombinant protein (NP_001750) with a C-terminal MYC/DDK tag, was expressed in HEK293 cells.

Species

Human

Source

HEK293

Description

The protein encoded by this gene belongs to the highly conserved cyclin family, whose members are characterized by a dramatic periodicity in protein abundance throughout the cell cycle. Cyclins function as regulators of CDK kinases. Different cyclins exhibit distinct expression and degradation patterns which contribute to the temporal coordination of each mitotic event. This cyclin forms a complex with CDK4 or CDK6 and functions as a regulatory subunit of the complex, whose activity is required for cell cycle G1/S transition. This protein has been shown to interact with and be involved in the phosphorylation of tumor suppressor protein Rb. Knockout studies of the homologous gene in mouse suggest the essential roles of this gene in ovarian granulosa and germ cell proliferation. High level expression of this gene was observed in ovarian and testicular tumors. Mutations in this gene are associated with megalencephaly-polymicrogyria-polydactyly-hydrocephalus syndrome 3 (MPPH3).

Molecular Mass

33.1 kDa

AA Sequence

MELLCHEVDPVRRRAVRDRNLLRDDRVLQNLLETIEERYLPQCSYFKCVQKDIQPYMR

 Tel: 1-631-559-9269 1-516-512-3133

 Email: info@creative-biomart.com  Fax: 1-631-938-8127

 45-1 Ramsey Road, Shirley, NY 11967, USA

RMVATWMLEVCEEQKCEEEVFPLAMNYLDRFLAGVPTPKSHLQLLGAVCMFLASKL
 KETSPLTAEKLCIYTDNSIKPQELLEWELVVLGKCLKWNLAAVTPHDFIEHILRKLPQQR
 EKLSLIRKHAQTFIALCATDFKFKAMYPPSMIATGSVGAICGLQQDEEVSSLTCDALT
 ELLAKITNTDVDCLKACQEIEAVLLNSLQQYRQDQRDGSKSEDELQASTPTDVRD
 IDLTRTRPLEQKLISEEDLAANDILDYKDDDDKV

Purity > 80% as determined by SDS-PAGE and Coomassie blue staining

Stability Stable for 3 months from receipt of products under proper storage and handling conditions.

Storage Store at -80 centigrade. Avoid repeated freeze-thaw cycles.

Concentration 50 µg/mL as determined by BCA

Storage Buffer 100 mM glycine, 25 mM Tris-HCl, pH 7.3.

GENE INFORMATION

Gene Name [CCND2 cyclin D2 \[Homo sapiens \(human\) \]](#)

Official Symbol [CCND2](#)

Synonyms CCND2; cyclin D2; G1/S-specific cyclin-D2; G1/S specific cyclin D2; G1/S-specific cyclin D2; KIAK0002; MGC102758;

Gene ID [894](#)

mRNA Refseq [NM_001759](#)

Protein Refseq [NP_001750](#)

 Tel: 1-631-559-9269 1-516-512-3133

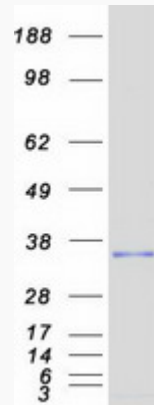
 Email: info@creative-biomart.com  Fax: 1-631-938-8127

 45-1 Ramsey Road, Shirley, NY 11967, USA

MIM 123833

UniProt ID P30279

SDS-PAGE



 Tel: 1-631-559-9269 1-516-512-3133

 Email: info@creative-biomart.com  Fax: 1-631-938-8127

 45-1 Ramsey Road, Shirley, NY 11967, USA